

Active Recombinant Human SRC protein, His-tagged

Cat. No. SRC-533H Lot. No. (See product label)

SPECIFICATION

Product Overview	Recombinant Human SRC fused with His tag at N-terminal was expressed in Insect cells.
Species	Human
Source	Insect Cells
Description	This gene is highly similar to the v-src gene of Rous sarcoma virus. This proto-oncogene may play a role in the regulation of embryonic development and cell growth. The protein encoded by this gene is a tyrosine-protein kinase whose activity can be inhibited by phosphorylation by c-SRC kinase. Mutations in this gene could be involved in the malignant progression of colon cancer. Two transcript variants encoding the same protein have been found for this gene.
Form	25 mM Tris-HCl, pH 8.0, 69 mM NaCl, 1.35 mM KCl, 0.025% Tween-20, 125 mM imidazole, 50% glycerol, and 3 mM DTT
Bio-activity	205 pmol/min/μg
Molecular Mass	60.5 kDa
Purity	>85%
Applications	Useful for the study of enzyme kinetics, screening inhibitors, and selectivity profiling.

 Tel: 1-631-559-9269 1-516-512-3133

 Email: info@creative-biomart.com  Fax: 1-631-938-8127

 45-1 Ramsey Road, Shirley, NY 11967, USA

Storage >6 months at –80 centigrade. Avoid freeze/thaw cycles.

Concentration 1.2 mg/ml

GENE INFORMATION

Gene Name SRC SRC proto-oncogene, non-receptor tyrosine kinase [Homo sapiens]

Official Symbol SRC

Synonyms ASV; SRC1; THC6; c-SRC; p60-Src; proto-oncogene c-Src; protooncogene SRC, Rous sarcoma; tyrosine kinase pp60c-src; tyrosine-protein kinase SRC-1; v-src avian sarcoma (Schmidt-Ruppin A-2) viral oncogene homolog

Gene ID 6714

mRNA Refseq NM_005417

Protein Refseq NP_005408

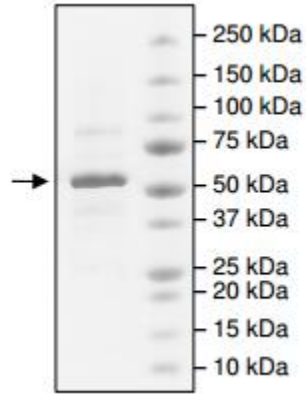
MIM 190090

UniProt ID P12931

 Tel: 1-631-559-9269 1-516-512-3133

 Email: info@creative-biomart.com  Fax: 1-631-938-8127

 45-1 Ramsey Road, Shirley, NY 11967, USA



Tel: 1-631-559-9269 1-516-512-3133

Email: info@creative-biomart.com Fax: 1-631-938-8127

45-1 Ramsey Road, Shirley, NY 11967, USA