

Recombinant Human SRC Protein (Met1-Leu536), N-His tagged

Cat. No. SRC-6350H Lot. No. (See product label)

SPECIFICATION

Product Overview	Recombinant human SRC (Met1-Leu536) fused with the N-terminal His tag was expressed in E. coli.
Species	Human
Source	E.coli
ProteinLength	Met1-Leu536
Form	Lyophilized powder/frozen liquid
Molecular Mass	62.00 kDa
Purity	> 90 % as determined by SDS-PAGE
Notes	For research use only.
Storage	Use a manual defrost freezer and avoid repeated freeze thaw cycles. Store at 2 to 8 centigrade for one week. Store at -20 to -80 centigrade for twelve months from the date of receipt.
Storage Buffer	Lyophilized from PBS, pH 7.4, 0.02 % NLS, 1 mM EDTA, 4 % trehalose, 1 % mannitol.
Reconstitution	Reconstitute in sterile water for a stock solution.

 Tel: 1-631-559-9269 1-516-512-3133

 Email: info@creative-biomart.com  Fax: 1-631-938-8127

 45-1 Ramsey Road, Shirley, NY 11967, USA

Shipping They are shipped out with dry ice/blue ice unless customers require otherwise.

GENE INFORMATION

Gene Name SRC v-src sarcoma (Schmidt-Ruppin A-2) viral oncogene homolog (avian) [Homo sapiens (human)]

Official Symbol SRC

Synonyms SRC; v-src sarcoma (Schmidt-Ruppin A-2) viral oncogene homolog (avian); SRC1, v src avian sarcoma (Schmidt Ruppin A 2) viral oncogene homolog; proto-oncogene tyrosine-protein kinase Src; ASV; c src; proto-oncogene c-Src; tyrosine kinase pp60c-src; tyrosine-protein kinase SRC-1; protooncogene SRC, Rous sarcoma; SRC1; c-SRC; p60-Src;

Gene ID 6714

mRNA Refseq NM_005417

Protein Refseq NP_005408

MIM 190090

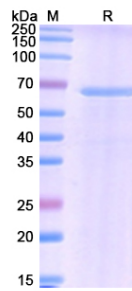
UniProt ID P12931

 Tel: 1-631-559-9269 1-516-512-3133

 Email: info@creative-biomart.com  Fax: 1-631-938-8127

 45-1 Ramsey Road, Shirley, NY 11967, USA

SDS-PAGE



 Tel: 1-631-559-9269 1-516-512-3133

 Email: info@creative-biomart.com  Fax: 1-631-938-8127

 45-1 Ramsey Road, Shirley, NY 11967, USA