

Recombinant Human SREK1 Protein (421-508 aa), His-Myc-tagged

Cat. No. SREK1-2565H Lot. No. (See product label)

SPECIFICATION

Product Overview	Recombinant Human SREK1 Protein (421-508 aa) is produced by E. coli expression system. This protein is fused with a 10xHis tag at the N-terminal and a Myc tag at the C-terminal. Research Area: Epigenetics and Nuclear Signaling. Protein Description: Partial.
Species	Human
Source	E.coli
ProteinLength	421-508 aa
Description	Participates in the regulation of alternative splicing by modulating the activity of other splice factors. Inhibits the splicing activity of SFRS1, SFRS2 and SFRS6. Augments the splicing activity of SFRS3.
Form	Tris-based buffer,50% glycerol
Molecular Mass	17.3 kDa
AA Sequence	KERDTHISERRERERSTSMRKSSNDRDGKEKLEKNSTSLKEKEHNKEPDSSVSKEVD DKDAPRTEENKIQHNGNCQLNEENLSTKTEAV
Purity	> 85% as determined by SDS-PAGE.

 Tel: 1-631-559-9269 1-516-512-3133

 Email: info@creative-biomart.com  Fax: 1-631-938-8127

 45-1 Ramsey Road, Shirley, NY 11967, USA

Notes	Repeated freezing and thawing is not recommended. Store working aliquots at 4 centigrade for up to one week.
Storage	The shelf life is related to many factors, storage state, buffer ingredients, storage temperature and the stability of the protein itself. Generally, the shelf life of liquid form is 6 months at -20 centigrade/-80 centigrade. The shelf life of lyophilized form is 12 months at -20 centigrade/-80 centigrade.
Concentration	A hardcopy of COA will be sent along with the products. Please refer to it for detailed information.

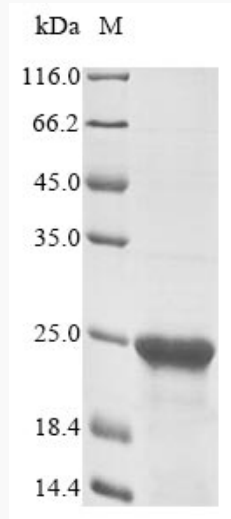
GENE INFORMATION

Gene Name	SREK1 splicing regulatory glutamine/lysine-rich protein 1 [Homo sapiens]
Official Symbol	SREK1
Synonyms	SREK1; DKFZp564B176; SRrp86; SRrp508; splicing regulatory protein 508; SFRS12; MGC133045;
Gene ID	140890
mRNA Refseq	NM_001077199
Protein Refseq	NP_001070667
MIM	609268
UniProt ID	Q8WXA9

 Tel: 1-631-559-9269 1-516-512-3133

 Email: info@creative-biomart.com  Fax: 1-631-938-8127

 45-1 Ramsey Road, Shirley, NY 11967, USA



(Tris-Glycine gel) Discontinuous SDS-PAGE (reduced) with 5% enrichment gel and 15% separation gel.

 Tel: 1-631-559-9269 1-516-512-3133

 Email: info@creative-biomart.com  Fax: 1-631-938-8127

 45-1 Ramsey Road, Shirley, NY 11967, USA