

Recombinant Full Length Human SRF Protein, C-Flag-tagged

Cat. No. SRF-597HFL **Lot. No.** (See product label)

SPECIFICATION

Product Overview	Recombinant Full Length Human SRF Protein, fused to Flag-tag at C-terminus, was expressed in Mammalian cells.
Species	Human
Source	Mammalian Cells
Description	<p>This gene encodes a ubiquitous nuclear protein that stimulates both cell proliferation and differentiation. It is a member of the MADS (MCM1, Agamous, Deficiens, and SRF) box superfamily of transcription factors. This protein binds to the serum response element (SRE) in the promoter region of target genes. This protein regulates the activity of many immediate-early genes, for example c-fos, and thereby participates in cell cycle regulation, apoptosis, cell growth, and cell differentiation. This gene is the downstream target of many pathways; for example, the mitogen-activated protein kinase pathway (MAPK) that acts through the ternary complex factors (TCFs). Two transcript variants encoding different isoforms have been found for this gene.</p>
Form	25 mM Tris HCl, pH 7.3, 100 mM glycine, 10% glycerol.
Molecular Mass	51.4 kDa
AA Sequence	<p>MLPTQAGAAAALGRGSALGGSLNRTPTGRPGGGGTRGANGGRVPGNGAGLGP GRLEREAAAAAATTPAP TAGALYSGSEGDSESGEEEEELGAERRGLKRSLSEMEIG MVGGPPEASAAATGGYGPVSGAVSGAKPGKKT RGRVKIKMEFIDNKLRRYTTFSK</p>

 Tel: 1-631-559-9269 1-516-512-3133

 Email: info@creative-biomart.com  Fax: 1-631-938-8127

 45-1 Ramsey Road, Shirley, NY 11967, USA

RKTGIMKKAYELSTLTGTQVLLLVASETGHVYTFATRKLQPMITSET GKALIQTCLNS
 PDSPPRSDPTTDQRMSATGFEETDLTYQVSESDSSGETKDTLKPFTVTNLPGTTS
 TIQ TAPSTSTTMQVSSGSPFITNYLAPVSASVSPSAVSSANGTVLKSTGSGPVSSG
 GLMQLPTSFTLMPGGA VAQQVPVQAIQVHQAPQQASPSRDSSTDLTQTSSSGTVT
 LPATIMTSSVPTTVGGHMMYPSPHAVMYAPT SGLGDGSLTVLNAFSQAPSTMQVS
 HSQVQEPGGVPQVFLTASSGTVQIPVSAVQLHQMAVIGQQAGSSSN
 LTELQVVNLDTAHSTKSETRTRPLEQKLISEEDLAANDILDYKDDDDKV

Purity > 80% as determined by SDS-PAGE and Coomassie blue staining.

Stability Stable for 12 months from the date of receipt of the product under proper storage and handling conditions. Avoid repeated freeze-thaw cycles.

Storage Store at -80 centigrade.

Concentration >50 ug/mL as determined by microplate BCA method.

Preparation Recombinant protein was captured through anti-DDK affinity column followed by conventional chromatography steps.

Protein Families Druggable Genome, Transcription Factors

Protein Pathways MAPK signaling pathway

Full Length Full L.

GENE INFORMATION

Gene Name SRF serum response factor [Homo sapiens (human)]

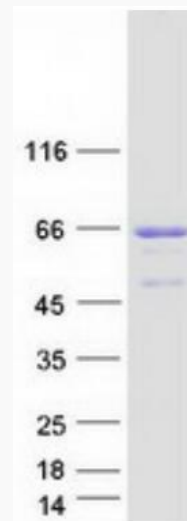
Official Symbol SRF

 Tel: 1-631-559-9269 1-516-512-3133

 Email: info@creative-biomart.com  Fax: 1-631-938-8127

 45-1 Ramsey Road, Shirley, NY 11967, USA

Synonyms	MCM1
Gene ID	6722
mRNA Refseq	NM_003131.4
Protein Refseq	NP_003122.1
MIM	600589
UniProt ID	P11831



Coomassie blue staining of purified SRF protein.

 Tel: 1-631-559-9269 1-516-512-3133

 Email: info@creative-biomart.com  Fax: 1-631-938-8127

 45-1 Ramsey Road, Shirley, NY 11967, USA