

Recombinant Full Length Human SRL Protein, C-Flag-tagged

Cat. No. SRL-1854HFL Lot. No. (See product label)

SPECIFICATION

Product Overview	Recombinant Full Length Human SRL Protein, fused to Flag-tag at C-terminus, was expressed in Mammalian cells.
Species	Human
Source	Mammalian Cells
Description	Predicted to enable GTP binding activity. Predicted to be involved in endocytosis and endosomal transport. Predicted to act upstream of or within response to muscle activity involved in regulation of muscle adaptation and store-operated calcium entry. Predicted to be located in sarcoplasmic reticulum lumen and sarcoplasmic reticulum membrane. Predicted to be active in intracellular membrane-bounded organelle.
Form	25 mM Tris HCl, pH 7.3, 100 mM glycine, 10% glycerol.
Molecular Mass	54.3 kDa
AA Sequence	MRALVLLGCLLASLLFSGQAEETEDANEEAPLRDRSHIEKTLMLNEDKPSDDYSAVL QRLRKIYHSSIKP LEQSYKYNELRQHEITDGEITSKPMVFLGPWSVGKSTMINYLLG LENTRYQLYTGAEPPTSEFTVLMHG PKLKTIEGIVMAADSARSFSPLEKFGQNFLEK LIGIEVPHKLLERVTFVDTPGIIENRKQQERGYPFNDV CQWFIDRADLIFVVFDPKLD VGLELEMLFRQLKGRESQIRIILNKADNLATQMLMRVYGALFWSLAPLI NVTEPPRVY VSSFWPQEYKPDTHQELFLQEEISLLEDLNQVIENRLENKIAFIRQHAIRVRIHALLVD RY LQTYKDKMTFFSDGELVFKDIVEDPDKFYIFKTIKTNVSKFDLPNREAYKDFFG INPISSFKLLSQQC SYMGGCFLEKIERAITQELPGLLGSGLGKPNPGALNCDKTGCS

 Tel: 1-631-559-9269 1-516-512-3133

 Email: info@creative-biomart.com  Fax: 1-631-938-8127

 45-1 Ramsey Road, Shirley, NY 11967, USA

ETPKNRYRKH TRTRPLEQKLISEEDLAANDILDYKDDDDKV

Purity > 80% as determined by SDS-PAGE and Coomassie blue staining.

Stability Stable for 12 months from the date of receipt of the product under proper storage and handling conditions. Avoid repeated freeze-thaw cycles.

Storage Store at -80 centigrade.

Concentration >50 ug/mL as determined by microplate BCA method.

Preparation Recombinant protein was captured through anti-DDK affinity column followed by conventional chromatography steps.

Full Length Full L.

GENE INFORMATION

Gene Name [SRL sarcalumenin \[Homo sapiens \(human\) \]](#)

Official Symbol [SRL](#)

Synonyms SAR

Gene ID [6345](#)

mRNA Refseq [NM_001098814.2](#)

Protein Refseq [NP_001092284.1](#)

MIM [604992](#)

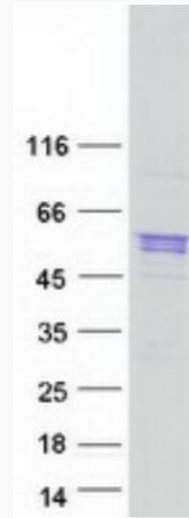
 Tel: 1-631-559-9269 1-516-512-3133

 Email: info@creative-biomart.com  Fax: 1-631-938-8127

 45-1 Ramsey Road, Shirley, NY 11967, USA

UniProt ID

Q86TD4



Coomassie blue staining of purified SRL protein.

 Tel: 1-631-559-9269 1-516-512-3133

 Email: info@creative-biomart.com  Fax: 1-631-938-8127

 45-1 Ramsey Road, Shirley, NY 11967, USA