

# Active Recombinant Full Length Human SRPK1 Protein, DDK-tagged, Biotinylated

**Cat. No.** SRPK1-5928HF    **Lot. No.** (See product label)

## SPECIFICATION

<b>Product Overview</b>	Full-length human SRPK1 [1-654(end) amino acids of accession number CAI20544.1] was expressed as N-terminal DYKDDDDK tagged, biotinylated protein (78 kDa) using baculovirus expression system. The protein was purified by using DYKDDDDK tag antibody agarose.
<b>Species</b>	Human
<b>Source</b>	Sf21 Cells
<b>ProteinLength</b>	1-654(end)
<b>Form</b>	50 mM Tris-HCl, 150 mM NaCl, 0.05% Brij35, 1 mM DTT, 10% glycerol, pH7.5
<b>Bio-activity</b>	The activity was determined by IMAP™ assay. The enzyme was incubated with fluorescein labeled peptide and phosphorylation was detected by IMAP™ technology (fluorescence polarization).
<b>Purity</b>	92%
<b>Applications</b>	SDS-PAGE
<b>Storage</b>	Store at -80C. Avoid repeating freeze-thaws.
<b>Conjugation</b>	Biotin

 Tel: 1-631-559-9269    1-516-512-3133

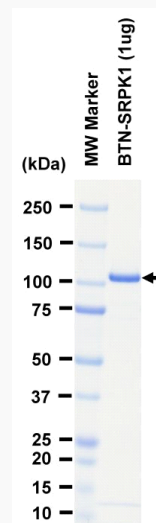
 Email: [info@creative-biomart.com](mailto:info@creative-biomart.com)     Fax: 1-631-938-8127

 45-1 Ramsey Road, Shirley, NY 11967, USA

## GENE INFORMATION

<b>Gene Name</b>	SRSF protein kinase 1
<b>Official Symbol</b>	SRPK1
<b>Synonyms</b>	SRPK1;SFRSK1
<b>Protein Refseq</b>	<a href="#">CAI20544.1</a>
<b>UniProt ID</b>	<a href="#">Q96SB4</a>

## SDS-PAGE



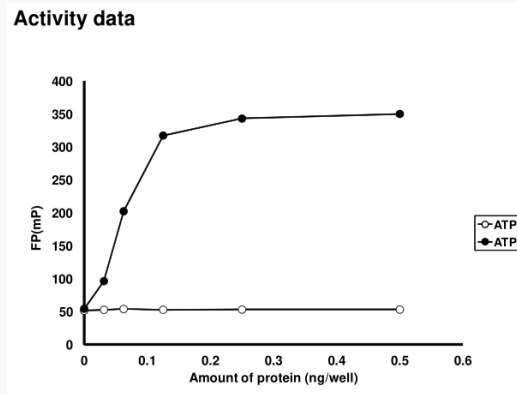
The purity was assessed by SDS-PAGE/CBB staining.

Tel: 1-631-559-9269 1-516-512-3133

Email: [info@creative-biomart.com](mailto:info@creative-biomart.com) Fax: 1-631-938-8127

45-1 Ramsey Road, Shirley, NY 11967, USA

Activity data



The activity was determined by IMAP™ assay. The enzyme was incubated with fluorescein labeled peptide and phosphorylation was detected by IMAP™ technology (fluorescence polarization).

 Tel: 1-631-559-9269 1-516-512-3133

 Email: [info@creative-biomart.com](mailto:info@creative-biomart.com)  Fax: 1-631-938-8127

 45-1 Ramsey Road, Shirley, NY 11967, USA