

Active Recombinant Full Length Human SRPK1 Protein, GST-tagged

Cat. No. SRPK1-6923HF **Lot. No.** (See product label)


SPECIFICATION

Product Overview	Full-length human SRPK1 [1-654(end) amino acids of accession number CAI20544.1] was expressed as N-terminal GST-fusion protein (101 kDa) using E. coli expression system. GST-SRPK1 was purified by using glutathione sepharose chromatography.
Species	Human
Source	E.coli
ProteinLength	1-654(end)
Form	50 mM Tris-HCl, 150 mM NaCl, 0.05% Brij35, 1 mM DTT, 10% glycerol, pH7.5
Bio-activity	The activity was determined by IMAP™ assay. The enzyme was incubated with fluorescein labeled peptide and phosphorylation was detected by IMAP™ technology (fluorescence polarization).
Purity	56%
Applications	SDS-PAGE
Storage	Store at -80C. Avoid repeating freeze-thaws.

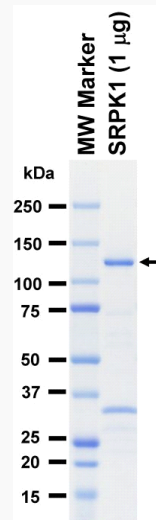
GENE INFORMATION

 Tel: 1-631-559-9269 1-516-512-3133

 Email: info@creative-biomart.com  Fax: 1-631-938-8127

 45-1 Ramsey Road, Shirley, NY 11967, USA

Gene Name	SRSF protein kinase 1
Official Symbol	SRPK1
Synonyms	SRPK1;SFRSK1
Protein Refseq	CAI20544.1
UniProt ID	Q96SB4

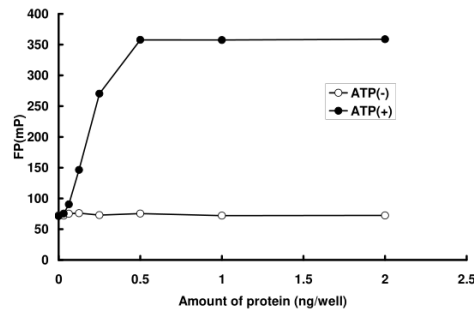
SDS-PAGE


The purity was assessed by SDS-PAGE/CBB staining.

 Tel: 1-631-559-9269 1-516-512-3133

 Email: info@creative-biomart.com  Fax: 1-631-938-8127

 45-1 Ramsey Road, Shirley, NY 11967, USA

Activity data
Activity data


The activity was determined by IMAP[™] assay. The enzyme was incubated with fluorescein labeled peptide and phosphorylation was detected by IMAP[™] technology (fluorescence polarization).

 Tel: 1-631-559-9269 1-516-512-3133

 Email: info@creative-biomart.com  Fax: 1-631-938-8127

 45-1 Ramsey Road, Shirley, NY 11967, USA