

# Recombinant Human SRSF protein kinase 2 Protein, His tagged

**Cat. No.** SRPK2-001H    **Lot. No.** (See product label)

## SPECIFICATION

<b>Product Overview</b>	Recombinant Human SRSF protein kinase 2 protein (313-466 aa) with His tag was expressed in E. coli.
<b>Species</b>	Human
<b>Source</b>	E.coli
<b>ProteinLength</b>	313-466 aa
<b>Description</b>	Enables ATP binding activity; magnesium ion binding activity; and protein serine/threonine kinase activity. Involved in several processes, including R-loop processing; peptidyl-serine phosphorylation; and regulation of viral genome replication. Located in chromatin; cytosol; and nuclear lumen.
<b>Molecular Mass</b>	19 kDa
<b>AA Sequence</b>	MNDQDGEYCPVVKLKTGLEEAAEAETAKDNGEAEDQEEKEDAENIKEDDDVD QELANIDPTWIESPKTNGHIENGPFSLEQQQLDDEDDDEEDCPNPEEYNLDEPNAESD YTYSSSYEQFNGELPNGRHKIPESQFPEFSTSLFSGSLEPVAHHHHHHHHH
<b>Endotoxin</b>	< 1 EU/μg by LAL.
<b>Purity</b>	> 90 % by SDS-PAGE

 Tel: 1-631-559-9269    1-516-512-3133

 Email: [info@creative-biomart.com](mailto:info@creative-biomart.com)     Fax: 1-631-938-8127

 45-1 Ramsey Road, Shirley, NY 11967, USA

<b>Storage</b>	Store it under sterile conditions at -20 to -80 centigrade. It is recommended that the protein be aliquoted for optimal storage. Avoid repeated freeze-thaw cycles.
<b>Storage Buffer</b>	Sterile PBS, pH7.4, 10 % Glycerol, 8 % Trehalose
<b>Concentration</b>	0.9 mg/mL by BCA

## GENE INFORMATION

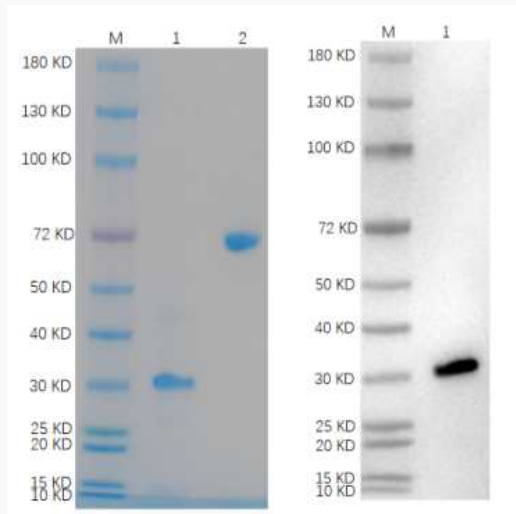
<b>Gene Name</b>	SRPK2 SRSF protein kinase 2 [ Homo sapiens (human) ]
<b>Official Symbol</b>	SRPK2
<b>Synonyms</b>	SRPK2; SRSF protein kinase 2; SFRS protein kinase 2; serine/arginine rich splicing factor kinase 2; SFRSK2; SR protein kinase 2; H_RG152G17.1a; H_RG152G17.1b; WUGSC:H_RG152G17.1a; serine kinase SRPK2; SR-protein-specific kinase 2; serine/threonine-protein kinase SRPK2; serine/arginine-rich splicing factor kinase 2; serine/arginine-rich protein-specific kinase 2; FLJ36101
<b>Gene ID</b>	6733
<b>mRNA Refseq</b>	NM_182691
<b>Protein Refseq</b>	NP_872633
<b>MIM</b>	602980
<b>UniProt ID</b>	P78362

 Tel: 1-631-559-9269 1-516-512-3133

 Email: [info@creative-biomart.com](mailto:info@creative-biomart.com)  Fax: 1-631-938-8127

 45-1 Ramsey Road, Shirley, NY 11967, USA

**Reducing 4 %-20 %  
SDS-PAGE (CBB  
stained) and WB  
(Anti-His Mouse  
Monoclonal  
antibody) analysis  
profiles of purified  
SRPK2.**



1. SRPK2: 1  $\mu$ g
2. BSA: 1  $\mu$ g

 Tel: 1-631-559-9269 1-516-512-3133

 Email: [info@creative-biomart.com](mailto:info@creative-biomart.com)  Fax: 1-631-938-8127

 45-1 Ramsey Road, Shirley, NY 11967, USA