

## Recombinant Human SRPK2 Protein (Met1-Ser688), C-His tagged

Cat. No. SRPK2-6356H Lot. No. (See product label)

### SPECIFICATION

<b>Product Overview</b>	Recombinant human SRPK2 (Met1-Ser688) fused with the C-terminal His tag was expressed in mammalian cells.
<b>Species</b>	Human
<b>Source</b>	Mammalian Cells
<b>ProteinLength</b>	Met1-Ser688
<b>Form</b>	Lyophilized powder/frozen liquid
<b>Molecular Mass</b>	75.68 kDa
<b>Purity</b>	> 90 % as determined by SDS-PAGE
<b>Notes</b>	For research use only.
<b>Storage</b>	Use a manual defrost freezer and avoid repeated freeze thaw cycles. Store at 2 to 8 centigrade for one week. Store at -20 to -80 centigrade for twelve months from the date of receipt.
<b>Storage Buffer</b>	Supplied as solution form in PBS or lyophilized from PBS.
<b>Reconstitution</b>	Reconstitute in sterile water for a stock solution.

 Tel: 1-631-559-9269 1-516-512-3133

 Email: [info@creative-biomart.com](mailto:info@creative-biomart.com)  Fax: 1-631-938-8127

 45-1 Ramsey Road, Shirley, NY 11967, USA

**Shipping** They are shipped out with dry ice/blue ice unless customers require otherwise.

## GENE INFORMATION

**Gene Name** [SRPK2 SRSF protein kinase 2 \[ Homo sapiens \(human\) \]](#)

**Official Symbol** [SRPK2](#)

**Synonyms** SRPK2; SRSF protein kinase 2; SFRS protein kinase 2; serine/arginine rich splicing factor kinase 2; SFRSK2; SR protein kinase 2; H\_RG152G17.1a; H\_RG152G17.1b; WUGSC:H\_RG152G17.1a; serine kinase SRPK2; SR-protein-specific kinase 2; serine/threonine-protein kinase SRPK2; serine/arginine-rich splicing factor kinase 2; serine/arginine-rich protein-specific kinase 2; FLJ36101;

**Gene ID** [6733](#)

**mRNA Refseq** [NM\\_182691](#)

**Protein Refseq** [NP\\_872633](#)

**MIM** [602980](#)

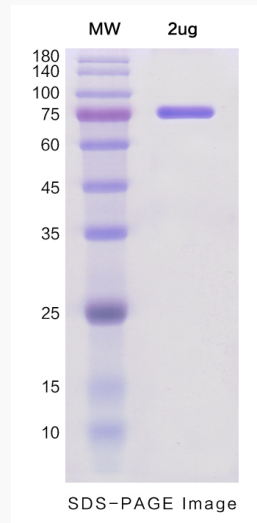
**UniProt ID** [P78362](#)

 Tel: 1-631-559-9269 1-516-512-3133

 Email: [info@creative-biomart.com](mailto:info@creative-biomart.com)  Fax: 1-631-938-8127

 45-1 Ramsey Road, Shirley, NY 11967, USA

**SDS-PAGE**



 Tel: 1-631-559-9269 1-516-512-3133

 Email: [info@creative-biomart.com](mailto:info@creative-biomart.com)  Fax: 1-631-938-8127

 45-1 Ramsey Road, Shirley, NY 11967, USA