

Recombinant Human SRPRB Protein, Myc/DDK-tagged, C13 and N15-labeled

Cat. No. SRPRB-1831H Lot. No. (See product label)

SPECIFICATION

Product Overview	SRPRB MS Standard C13 and N15-labeled recombinant protein (NP_067026) with a C-terminal MYC/DDK tag, was expressed in HEK293 cells.
Species	Human
Source	HEK293
Description	The protein encoded by this gene has similarity to mouse protein which is a subunit of the signal recognition particle receptor (SR). This subunit is a transmembrane GTPase belonging to the GTPase superfamily. It anchors alpha subunit, a peripheral membrane GTPase, to the ER membrane. SR is required for the cotranslational targeting of both secretory and membrane proteins to the ER membrane.
Molecular Mass	29.7 kDa
AA Sequence	MASADSRRLADGGGAGGTFQPYLDTLRQELQQTDPTLLSVVVAVLAVLLTLVFWKLI RSRRSSQRAVLLVGLCDGKTLFVRLLTGLYRDTQTSITDSCAVYRVNRRGNSLT LIDLPGHESLRLQFLERFKSSARAI FVVD SAAFQREVKDVAEFLYQVLIDSMGLKNT PSFLIACNKQDIAMAKSAKLIQQLEKELNTRLVTRSAAPSTLDSSTAPAQLGKKGK EFEFSQLPLKVEFLECSAKGGRGDVGSADIQDLEKWLAKIASGPTRTRPLEQKLISEE DLAANDILDYKDDDDKV
Purity	> 80% as determined by SDS-PAGE and Coomassie blue staining

 Tel: 1-631-559-9269 1-516-512-3133

 Email: info@creative-biomart.com  Fax: 1-631-938-8127

 45-1 Ramsey Road, Shirley, NY 11967, USA

Stability	Stable for 3 months from receipt of products under proper storage and handling conditions.
Storage	Store at -80 centigrade. Avoid repeated freeze-thaw cycles.
Concentration	50 µg/mL as determined by BCA
Storage Buffer	100 mM glycine, 25 mM Tris-HCl, pH 7.3.

GENE INFORMATION

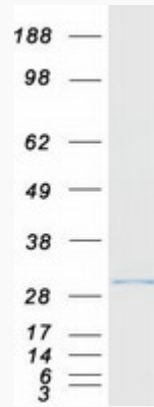
Gene Name	SRPRB SRP receptor subunit beta [Homo sapiens (human)]
Official Symbol	SRPRB
Synonyms	SRPRB; SRP receptor subunit beta; APMCF1; SR-beta; signal recognition particle receptor subunit beta; SRP receptor beta subunit; signal recognition particle receptor, B subunit; signal recognition particle receptor, beta subunit
Gene ID	58477
mRNA Refseq	NM_021203
Protein Refseq	NP_067026
MIM	616883
UniProt ID	Q9Y5M8

 Tel: 1-631-559-9269 1-516-512-3133

 Email: info@creative-biomart.com  Fax: 1-631-938-8127

 45-1 Ramsey Road, Shirley, NY 11967, USA

SDS-PAGE



 Tel: 1-631-559-9269 1-516-512-3133

 Email: info@creative-biomart.com  Fax: 1-631-938-8127

 45-1 Ramsey Road, Shirley, NY 11967, USA