

Active Recombinant Full Length Human SRR Protein, C-Flag-tagged

Cat. No. SRR-1114HFL Lot. No. (See product label)

SPECIFICATION

Product Overview	Recombinant Full Length Human SRR Protein, fused to Flag-tag at C-terminus, was expressed in Mammalian cells.
Species	Human
Source	Mammalian Cells
Description	Enables several functions, including L-serine ammonia-lyase activity; PDZ domain binding activity; and anion binding activity. Involved in pyruvate biosynthetic process; response to lipopolysaccharide; and serine family amino acid metabolic process. Located in cytoplasm and neuronal cell body.
Form	25 mM Tris HCl, pH 7.3, 100 mM glycine, 10% glycerol.
Bio-activity	SRR Facilitates D-serine Production from L-serine: In vitro assays, Purified human SRR converts L-serine to D-serine in a dose and time dependent manner. Y-axis is pmol of D-serine produced.
Molecular Mass	36.4 kDa
AA Sequence	MCAQYCISFADVEKAHINIRDSIHLTPVLTSSILNQLTGRNLFFKCELFQKTGSFKIRG ALNAVRSLVPD ALERKPKAVVTHSSGNHGQALTYAAKLEGIPAYIVVPQTAPDCKKL AIQAYGASIVYCEPSDESRENVAK RVTEETEGIMVHPNQEPAVIAGQGTTIALEVLNQ VPLVDALVVPVGGGGMLAGIAITVKALKPSVKVYAAE PSNADDCYQSKLKGKLMFN

 Tel: 1-631-559-9269 1-516-512-3133

 Email: info@creative-biomart.com  Fax: 1-631-938-8127

 45-1 Ramsey Road, Shirley, NY 11967, USA

LYPPETIADGVKSSIGLNTWPIIRDLVDDIFTVTEDEIKCATQLVWERMKL
 LIEPTAGVGVAAVLSQHFQTVSPEVKNICIVLSSGNVDLTSSITWVKQAERPASYQSV
 SVTRTRPLEQKLISEEDLAANDILDYKDDDDKV

Purity > 80% as determined by SDS-PAGE and Coomassie blue staining.

Stability Stable for 12 months from the date of receipt of the product under proper storage and handling conditions. Avoid repeated freeze-thaw cycles.

Storage Store at -80 centigrade.

Concentration >50 ug/mL as determined by microplate BCA method.

Preparation Recombinant protein was captured through anti-DDK affinity column followed by conventional chromatography steps.

Protein Pathways Glycine, serine and threonine metabolism

Full Length Full L.

GENE INFORMATION

Gene Name [SRR serine racemase \[Homo sapiens \(human\) \]](#)

Official Symbol [SRR](#)

Synonyms ILV1; ISO1

Gene ID [63826](#)

mRNA Refseq [NM_021947.3](#)

 Tel: 1-631-559-9269 1-516-512-3133

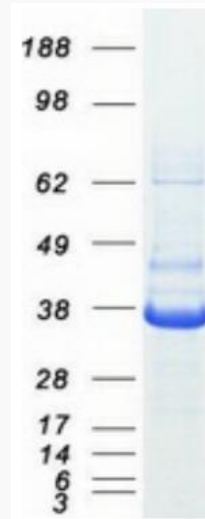
 Email: info@creative-biomart.com  Fax: 1-631-938-8127

 45-1 Ramsey Road, Shirley, NY 11967, USA

Protein Refseq NP_068766.1

MIM 606477

UniProt ID Q9GZT4



Coomassie blue staining of purified SRR protein.

 Tel: 1-631-559-9269 1-516-512-3133

 Email: info@creative-biomart.com  Fax: 1-631-938-8127

 45-1 Ramsey Road, Shirley, NY 11967, USA