

# Recombinant Human SRR Protein, Myc/DDK-tagged, C13 and N15-labeled

**Cat. No.** SRR-5706H    **Lot. No.** (See product label)

## SPECIFICATION

<b>Product Overview</b>	SRR MS Standard C13 and N15-labeled recombinant protein (NP_068766) with a C-terminal MYC/DDK tag, was expressed in HEK293 cells.
<b>Species</b>	Human
<b>Source</b>	HEK293
<b>Description</b>	Catalyzes the synthesis of D-serine from L-serine. D-serine is a key coagonist with glutamate at NMDA receptors. Has dehydratase activity towards both L-serine and D-serine.
<b>Molecular Mass</b>	36.6 kDa
<b>AA Sequence</b>	MCAQYCISFADVEKAHINIRDSIHLTPVLTSSILNQLTGRNLFFKCELFQKTGSFKIRG ALNAVRSLVPDALERKPKAVVTHSSGNHGQALTYAAKLEGIPAYIVVPQTAPDCKKL AIQAYGASIVYCEPSDESRENVAKRVTEETEGIMVHPNQEPAVIAGQGTTIALEVLNQV PLVDALVVPVGGGMLAGIAITVKALKPSVKVYAAEPSNADDCYQSKLKGKLMPLY PPETIADGVKSSIGLNTWPIIRDLDVDDIFTVTEDEIKCATQLVWERMKLLIEPTAGVGV AAVLSQHFQTVSPEVKNICIVLSGGNVDLTSSITWVKQAERPASYQSVSVTRTRPLE QKLISEEDLAANDILDYKDDDDKV
<b>Purity</b>	> 80% as determined by SDS-PAGE and Coomassie blue staining
<b>Stability</b>	Stable for 3 months from receipt of products under proper storage and handling

 Tel: 1-631-559-9269    1-516-512-3133

 Email: [info@creative-biomart.com](mailto:info@creative-biomart.com)     Fax: 1-631-938-8127

 45-1 Ramsey Road, Shirley, NY 11967, USA

conditions.

**Storage** Store at -80 centigrade. Avoid repeated freeze-thaw cycles.

**Concentration** 50 µg/mL as determined by BCA

**Storage Buffer** 100 mM glycine, 25 mM Tris-HCl, pH 7.3.

## GENE INFORMATION

**Gene Name** [SRR serine racemase \[ Homo sapiens \(human\) \]](#)

**Official Symbol** [SRR](#)

**Synonyms** SRR; serine racemase; ILV1; ISO1; D-serine dehydratase; L-serine dehydratase; D-serine ammonia-lyase; L-serine ammonia-lyase;

**Gene ID** [63826](#)

**mRNA Refseq** [NM\\_021947](#)

**Protein Refseq** [NP\\_068766](#)

**MIM** [606477](#)

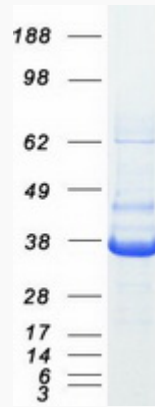
**UniProt ID** [Q9GZT4](#)

 Tel: 1-631-559-9269 1-516-512-3133

 Email: [info@creative-biomart.com](mailto:info@creative-biomart.com)  Fax: 1-631-938-8127

 45-1 Ramsey Road, Shirley, NY 11967, USA

SDS-PAGE



 Tel: 1-631-559-9269 1-516-512-3133

 Email: [info@creative-biomart.com](mailto:info@creative-biomart.com)  Fax: 1-631-938-8127

 45-1 Ramsey Road, Shirley, NY 11967, USA