

# Recombinant Human SRSF10 Protein, Myc/DDK-tagged, C13 and N15-labeled

**Cat. No.** SRSF10-3170H    **Lot. No.** (See product label)

## SPECIFICATION

<b>Product Overview</b>	SFRS13A MS Standard C13 and N15-labeled recombinant protein (NP_006616) with a C-terminal MYC/DDK tag, was expressed in HEK293 cells.
<b>Species</b>	Human
<b>Source</b>	HEK293
<b>Description</b>	This gene product is a member of the serine-arginine (SR) family of proteins, which are involved in constitutive and regulated RNA splicing. Members of this family are characterized by N-terminal RNP1 and RNP2 motifs, which are required for binding to RNA, and multiple C-terminal SR/RS repeats, which are important in mediating association with other cellular proteins. This protein interacts with the oncoprotein TLS, and abrogates the influence of TLS on adenovirus E1A pre-mRNA splicing. This gene has pseudogenes on chromosomes 4, 9, 14, 18, and 20. Alternative splicing results in multiple transcript variants.
<b>Molecular Mass</b>	22.2 kDa
<b>AA Sequence</b>	MSRYLRPPNTSLFVRNVADDTRSEDLRREFGRYGPIVDVYVPLDFYTRRPRGFAYV QFEDVRDAEDALHNLDKRWICGRQIEIQFAQGDRKTPNQMKAKEGRNVYSSSRYPD DYDRYRRSRRSYERRRSRSRFDYNYRRSYSPRNSRPTGRPRRSRSHSDNDRP NCSWNTQYSSAYYTSRKITRTRPLEQKLISEEDLAANDILDYKDDDDKV
<b>Purity</b>	> 80% as determined by SDS-PAGE and Coomassie blue staining

 Tel: 1-631-559-9269    1-516-512-3133

 Email: [info@creative-biomart.com](mailto:info@creative-biomart.com)     Fax: 1-631-938-8127

 45-1 Ramsey Road, Shirley, NY 11967, USA

<b>Stability</b>	Stable for 3 months from receipt of products under proper storage and handling conditions.
<b>Storage</b>	Store at -80 centigrade. Avoid repeated freeze-thaw cycles.
<b>Concentration</b>	50 µg/mL as determined by BCA
<b>Storage Buffer</b>	100 mM glycine, 25 mM Tris-HCl, pH 7.3.
<b>GENE INFORMATION</b>	
<b>Gene Name</b>	<a href="#">SRSF10 serine/arginine-rich splicing factor 10 [ Homo sapiens (human) ]</a>
<b>Official Symbol</b>	<a href="#">SRSF10</a>
<b>Synonyms</b>	SRSF10; serine/arginine-rich splicing factor 10; FUS interacting protein (serine/arginine rich) 1, FUS interacting protein (serine arginine rich) 2, FUSIP1, FUSIP2, neural salient SR protein, SFRS13A, splicing factor, arginine/serine rich 13A; NSSR; SFRS13; splicing factor; arginine/serine rich 13; SR splicing factor 10; SRp38; SRp40; TASR1; TASR2; splicing factor SRp38; TLS-associated SR protein; neural-salient SR protein; 40 kDa SR-repressor protein; TLS-associated protein TASR; TLS-associated protein with SR repeats; TLS-associated serine-arginine protein 1; TLS-associated serine-arginine protein 2; splicing factor, arginine/serine-rich 13; splicing factor, arginine/serine-rich 13A; serine-arginine repressor protein (40 kDa); TLS-associated protein with Ser-Arg repeats; FUS-interacting serine-arginine-rich protein 1; FUS interacting protein (serine-arginine rich) 1; FUS-interacting protein (serine-arginine rich) 2; TASR; FUSIP1; FUSIP2; SFRS13A; FLJ30749; FLJ43846; DKFZp686H0644;
<b>Gene ID</b>	<a href="#">10772</a>

 Tel: 1-631-559-9269 1-516-512-3133

 Email: [info@creative-biomart.com](mailto:info@creative-biomart.com)  Fax: 1-631-938-8127

 45-1 Ramsey Road, Shirley, NY 11967, USA

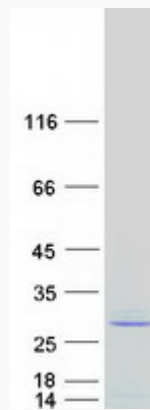
mRNA Refseq [NM\\_006625](#)

Protein Refseq [NP\\_006616](#)

MIM [605221](#)

UniProt ID [O75494](#)

**SDS-PAGE**



 Tel: 1-631-559-9269 1-516-512-3133

 Email: [info@creative-biomart.com](mailto:info@creative-biomart.com)  Fax: 1-631-938-8127

 45-1 Ramsey Road, Shirley, NY 11967, USA