

Recombinant Human SRSF10 Protein, GST-tagged

Cat. No. SRSF10-4556H **Lot. No.** (See product label)

SPECIFICATION

Product Overview	Human FUSIP1 partial ORF (AAH05039, 1 a.a. - 100 a.a.) recombinant protein with GST-tag at N-terminal.
Species	Human
Source	Wheat Germ
Description	This gene product is a member of the serine-arginine (SR) family of proteins, which is involved in constitutive and regulated RNA splicing. Members of this family are characterized by N-terminal RNP1 and RNP2 motifs, which are required for binding to RNA, and multiple C-terminal SR/RS repeats, which are important in mediating association with other cellular proteins. This protein can influence splice site selection of adenovirus E1A pre-mRNA. It interacts with the oncoprotein TLS, and abrogates the influence of TLS on E1A pre-mRNA splicing. Alternative splicing of this gene results in at least two transcript variants encoding different isoforms. In addition, transcript variants utilizing alternative polyA sites exist. [provided by RefSeq]
Molecular Mass	36.74 kDa
AA Sequence	MSRYLRPPNTSLFVRNVADDTRSEDLRREFGRYGPVVDVYVPLDFYTRRPRGFAYV QFEDVRDAEDALHNLDKRWICGRQIEIQFAQGDRKTPNQMKAKE
Applications	Enzyme-linked Immunoabsorbent Assay Western Blot (Recombinant protein) Antibody Production

 Tel: 1-631-559-9269 1-516-512-3133

 Email: info@creative-biomart.com  Fax: 1-631-938-8127

 45-1 Ramsey Road, Shirley, NY 11967, USA

Protein Array

Notes

Best use within three months from the date of receipt of this protein.

Storage

Store at -80 centigrade. Aliquot to avoid repeated freezing and thawing.

Storage Buffer

50 mM Tris-HCl, 10 mM reduced Glutathione, pH=8.0 in the elution buffer.

GENE INFORMATION

Gene Name

SRSF10 serine and arginine rich splicing factor 10 [Homo sapiens (human)]

Official Symbol

SRSF10

Synonyms

SRSF10; serine and arginine rich splicing factor 10; NSSR; TASR; SRp38; TASR1; TASR2; FUSIP1; FUSIP2; SFRS13; SRrp40; SFRS13A; PPP1R149; serine/arginine-rich splicing factor 10; 40 kDa SR-repressor protein FUS interacting protein (serine-arginine rich) 1; FUS-interacting protein (serine-arginine rich) 2; SR splicing factor 10; TLS-associated SR protein; TLS-associated protein TASR; TLS-associated protein with SR repeats; TLS-associated protein with Ser-Arg repeats; TLS-associated serine-arginine protein 1; TLS-associated serine-arginine protein 2; neural-salient SR protein; protein phosphatase 1, regulatory subunit 149; serine-arginine repressor protein (40 kDa); splicing factor SRp38; splicing factor, arginine/serine-rich 13; splicing factor, arginine/serine-rich 13A

Gene ID

10772

mRNA Refseq

NM_001191005

Protein Refseq

NP_001177934

 Tel: 1-631-559-9269 1-516-512-3133

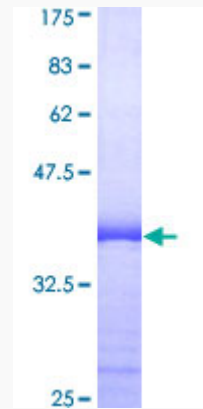
 Email: info@creative-biomart.com  Fax: 1-631-938-8127

 45-1 Ramsey Road, Shirley, NY 11967, USA

MIM 605221

UniProt ID O75494

**Quality Control
Testing**



12.5% SDS-PAGE Stained with Coomassie Blue.

 Tel: 1-631-559-9269 1-516-512-3133

 Email: info@creative-biomart.com  Fax: 1-631-938-8127

 45-1 Ramsey Road, Shirley, NY 11967, USA