

Recombinant Human SRSF10 Protein, Myc/DDK-tagged

Cat. No. SRSF10-995H Lot. No. (See product label)

SPECIFICATION

Product Overview	Recombinant human SRSF10 protein with a C-terminal Myc/DDK-tag was expressed in HEK293T.
Species	Human
Source	HEK293
Description	<p>This gene product is a member of the serine-arginine (SR) family of proteins, which are involved in constitutive and regulated RNA splicing. Members of this family are characterized by N-terminal RNP1 and RNP2 motifs, which are required for binding to RNA, and multiple C-terminal SR/RS repeats, which are important in mediating association with other cellular proteins. This protein interacts with the oncoprotein TLS, and abrogates the influence of TLS on adenovirus E1A pre-mRNA splicing. This gene has pseudogenes on chromosomes 4, 9, 14, 18, and 20. Alternative splicing results in multiple transcript variants.</p>
Molecular Mass	22 kDa
Purity	> 80% as determined by SDS-PAGE and Coomassie blue staining
Stability	Stable for 12 months from the date of receipt of the product under proper storage and handling conditions. Avoid repeated freeze-thaw cycles
Storage	Store it at -80 centigrade.

 Tel: 1-631-559-9269 1-516-512-3133

 Email: info@creative-biomart.com  Fax: 1-631-938-8127

 45-1 Ramsey Road, Shirley, NY 11967, USA

Concentration >50 ug/mL as determined by microplate BCA method

Storage Buffer 25 mM Tris.HCl, pH 7.3, 100 mM glycine, 10% glycerol

GENE INFORMATION

Gene Name [SRSF10 serine and arginine rich splicing factor 10 \[Homo sapiens \(human\) \]](#)

Official Symbol [SRSF10](#)

Synonyms

SRSF10; serine and arginine rich splicing factor 10; NSSR; TASR; SRp38; TASR1; TASR2; FUSIP1; FUSIP2; SFRS13; SRp40; SFRS13A; PPP1R149; serine/arginine-rich splicing factor 10; 40 kDa SR-repressor protein; FUS interacting protein (serine-arginine rich) 1; FUS-interacting protein (serine-arginine rich) 2; SR splicing factor 10; TLS-associated SR protein; TLS-associated protein TASR; TLS-associated protein with SR repeats; TLS-associated protein with Ser-Arg repeats; TLS-associated serine-arginine protein 1; TLS-associated serine-arginine protein 2; neural-salient SR protein; protein phosphatase 1, regulatory subunit 149; serine-arginine repressor protein (40 kDa); splicing factor SRp38; splicing factor, arginine/serine-rich 13; splicing factor, arginine/serine-rich 13A

Gene ID [10772](#)

mRNA Refseq [NM_001191005](#)

Protein Refseq [NP_001177934](#)

MIM [605221](#)

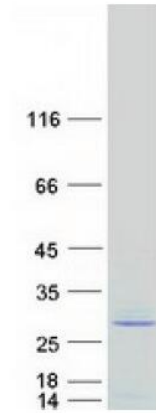
UniProt ID [O75494](#)

 Tel: 1-631-559-9269 1-516-512-3133

 Email: info@creative-biomart.com  Fax: 1-631-938-8127

 45-1 Ramsey Road, Shirley, NY 11967, USA

**Coomassie blue
staining of purified
SRSF10 protein**



The protein was produced from HEK293T cells transfected with SRSF10 cDNA clone using MegaTran 2.0.

 Tel: 1-631-559-9269 1-516-512-3133

 Email: info@creative-biomart.com  Fax: 1-631-938-8127

 45-1 Ramsey Road, Shirley, NY 11967, USA