

## Recombinant Human SRSF2 protein, His & GST-tagged

Cat. No. SRSF2-1401H Lot. No. (See product label)

### SPECIFICATION

<b>Product Overview</b>	Recombinant Human SRSF2 aa. (Thr14~Ser221 fused with N-terminal His & GST tag was produced in E. coli cells.
<b>Species</b>	Human
<b>Source</b>	E.coli
<b>ProteinLength</b>	Thr14~Ser221
<b>Description</b>	<p>The protein encoded by this gene is a member of the serine/arginine (SR)-rich family of pre-mRNA splicing factors, which constitute part of the spliceosome. Each of these factors contains an RNA recognition motif (RRM) for binding RNA and an RS domain for binding other proteins. The RS domain is rich in serine and arginine residues and facilitates interaction between different SR splicing factors. In addition to being critical for mRNA splicing, the SR proteins have also been shown to be involved in mRNA export from the nucleus and in translation. Two transcript variants encoding the same protein and one non-coding transcript variant have been found for this gene. In addition, a pseudogene of this gene has been found on chromosome 11.</p>
<b>Form</b>	Freeze-dried powder
<b>Molecular Mass</b>	54kDa as determined by SDS-PAGE reducing conditions.
<b>Endotoxin</b>	<1.0EU per 1g (determined by the LAL method)

 Tel: 1-631-559-9269 1-516-512-3133

 Email: [info@creative-biomart.com](mailto:info@creative-biomart.com)  Fax: 1-631-938-8127

 45-1 Ramsey Road, Shirley, NY 11967, USA

<b>Purity</b>	>90%
<b>Characteristic</b>	The isoelectric point is 11.9.
<b>Applications</b>	SDS-PAGE; WB; ELISA; IP; CoIP; Purification; Amine Reactive Labeling.
<b>Stability</b>	The thermal stability is described by the loss rate. The loss rate was determined by accelerated thermal degradation test, that is, incubate the protein at 37°C for 48h, and no obvious degradation and precipitation were observed. The loss rate is less than 5% within the expiration date under appropriate storage condition.
<b>Storage</b>	Avoid repeated freeze/thaw cycles. Store at 2-8°C for one month. Aliquot and store at -80°C for 12 months.
<b>Concentration</b>	200µg/mL
<b>Storage buffer</b>	100mM NaHCO <sub>3</sub> , 500mM NaCl, pH8.3, containing 1mM EDTA, 1mM DTT, 0.01% sarcosyl, 5% Trehalose and Proclin300.
<b>Reconstitution</b>	Reconstitute in 100mM NaHCO <sub>3</sub> , 500mM NaCl (pH8.3) to a concentration of 0.1-1.0 mg/mL. Do not vortex.

## GENE INFORMATION

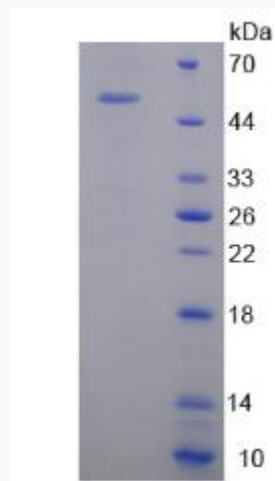
<b>Gene Name</b>	SRSF2 serine and arginine rich splicing factor 2 [ Homo sapiens (human) ]
<b>Official Symbol</b>	SRSF2
<b>Synonyms</b>	SRSF2; serine and arginine rich splicing factor 2; SC35; PR264; SC-35; SFRS2; SFRS2A; SRp30b; serine/arginine-rich splicing factor 2; SR splicing factor 2; splicing component, 35 kDa; splicing factor SC35; splicing factor, arginine/serine-rich 2

 Tel: 1-631-559-9269 1-516-512-3133

 Email: [info@creative-biomart.com](mailto:info@creative-biomart.com)  Fax: 1-631-938-8127

 45-1 Ramsey Road, Shirley, NY 11967, USA

<b>Gene ID</b>	6427
<b>mRNA Refseq</b>	NM_001195427.1
<b>Protein Refseq</b>	NP_001182356.1
<b>UniProt ID</b>	Q01130

**SDS-PAGE**

 Tel: 1-631-559-9269 1-516-512-3133

 Email: [info@creative-biomart.com](mailto:info@creative-biomart.com)  Fax: 1-631-938-8127

 45-1 Ramsey Road, Shirley, NY 11967, USA