

Recombinant Human SRSF7 protein, His-tagged

Cat. No. SRSF7-22H Lot. No. (See product label)

SPECIFICATION

Product Overview	Recombinant Human SRSF7 protein(Q16629)(1-238 aa), fused with His tag, was expressed in E. coli.
Species	Human
Source	E.coli
ProteinLength	1-238 aa
Form	Lyophilized from 10 mM Tris-HCl, 1 mM EDTA, 6% Trehalose, pH 8.0. The volume before lyophilization is 20µl/vial.
Molecular Mass	Predicted band size: 33.3 kDa
AA Sequence	MSRYGRYGGGETKVYVGNLGTGAGKGELERAFSYYGPLRTVWIARNPPGFVFEFE DPRDAEDAVRGLDGKVICGSRVVRVELSTGMPPRRSRFDRPPARRPFDPNDRCYECG EKGHYAYDCHRYSRRRRSRSRSRSHSRSRGRRYSRSRSRSRGRRSRSASPRRSR SISLRRSRASLRRSRSGSIKGSRYFQSPSRSRSRRSISRPRSSRSKSRSPSPKRS RSPSGSPRRSASPERMD
Purity	≥85%, by SDS-PAGE quantitative densitometry by Coomassie Blue Staining.
Storage	Store at -20°C, for extended storage, conserve at -20°C or -80°C.
Reconstitution	We recommend that this vial be briefly centrifuged prior to opening to bring the

 Tel: 1-631-559-9269 1-516-512-3133

 Email: info@creative-biomart.com  Fax: 1-631-938-8127

 45-1 Ramsey Road, Shirley, NY 11967, USA

contents to the bottom. Please reconstitute protein in deionized sterile water to a concentration of 0.1-1.0 mg/mL. We recommend to add 5-50% of glycerol (final concentration) and aliquot for long-term storage at -20°C/-80°C. Our default final concentration of glycerol is 50%. Customers could use it as reference.

GENE INFORMATION

Gene Name [SRSF7 serine/arginine-rich splicing factor 7 \[Homo sapiens \]](#)

Official Symbol [SRSF7](#)

Synonyms [SRSF7](#); serine/arginine-rich splicing factor 7; SFRS7, splicing factor, arginine/serine rich 7 (35kD) , splicing factor, arginine/serine rich 7, 35kDa; 9G8; AAG3; HSSG1; RBM37; SR splicing factor 7; ZCCHC20; ZCRB2; splicing factor 9G8; aging-associated protein 3; splicing factor, arginine/serine-rich 7, 35kDa; SFRS7

Gene ID [6432](#)

mRNA Refseq [NM_001031684](#)

Protein Refseq [NP_001026854](#)

MIM [600572](#)

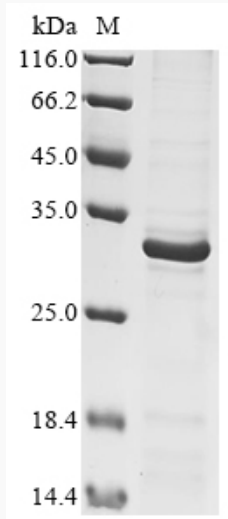
UniProt ID [Q16629](#)

 Tel: 1-631-559-9269 1-516-512-3133

 Email: info@creative-biomart.com  Fax: 1-631-938-8127

 45-1 Ramsey Road, Shirley, NY 11967, USA

SDS-PAGE



 Tel: 1-631-559-9269 1-516-512-3133

 Email: info@creative-biomart.com  Fax: 1-631-938-8127

 45-1 Ramsey Road, Shirley, NY 11967, USA