

Recombinant Mouse SRY Protein (1-144 aa), His-tagged

Cat. No. SRY-819M **Lot. No.** (See product label)

SPECIFICATION

Product Overview	Recombinant Mouse SRY Protein (1-144 aa) is produced by E. coli expression system. This protein is fused with a 6xHis tag at the N-terminal. Protein Description: Partial.
Species	Mouse
Source	E.coli
ProteinLength	1-144 aa
Description	Transcriptional regulator that controls a genetic switch in male development. It is necessary and sufficient for initiating male sex determination by directing the development of supporting cell precursors (pre-Sertoli cells) as Sertoli rather than granulosa cells. In male adult brain involved in the maintenance of motor functions of dopaminergic neurons . Involved in different aspects of gene regulation including promoter activation or repression. SRY HMG box recognizes DNA by partial intercalation in the minor groove. Promotes DNA bending. Also involved in pre-mRNA splicing . Binds to the DNA consensus sequence 5'-[AT]AACAA[AT]-3'.1 Publication.
Form	Tris-based buffer, 50% glycerol
Molecular Mass	21.2 kDa
AA Sequence	MEGHVKRPMNAFMVWSRGERHKLAQQNPSMQNTEISKQLGCRWKSLEAEKRPF FQEAQRLKILHREKYPNYKYQPHHRAKVSQRSGILQPAVASTKLYNLLQWDRNPHAI

 Tel: 1-631-559-9269 1-516-512-3133

 Email: info@creative-biomart.com  Fax: 1-631-938-8127

 45-1 Ramsey Road, Shirley, NY 11967, USA

TYRQDWSRAAHLYSKNQQSFYWQPVDIPTGHLQ

Purity > 90% as determined by SDS-PAGE.

Notes Repeated freezing and thawing is not recommended. Store working aliquots at 4 centigrade for up to one week.

Storage The shelf life is related to many factors, storage state, buffer ingredients, storage temperature and the stability of the protein itself. Generally, the shelf life of liquid form is 6 months at -20 centigrade/-80 centigrade. The shelf life of lyophilized form is 12 months at -20 centigrade/-80 centigrade.

Concentration A hardcopy of COA with concentration instruction is sent along with the products.

GENE INFORMATION

Gene Name [Sry sex determining region of Chr Y \[Mus musculus \]](#)

Official Symbol [SRY](#)

Synonyms SRY; Tdf; Tdy; MGC129295;

Gene ID [21674](#)

mRNA Refseq [NM_011564](#)

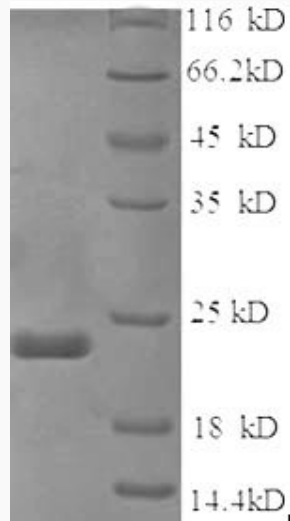
Protein Refseq [NP_035694](#)

UniProt ID [Q05738](#)

 Tel: 1-631-559-9269 1-516-512-3133

 Email: info@creative-biomart.com  Fax: 1-631-938-8127

 45-1 Ramsey Road, Shirley, NY 11967, USA



(Tris-Glycine gel) Discontinuous SDS-PAGE (reduced) with 5% enrichment gel and 15% separation gel.

 Tel: 1-631-559-9269 1-516-512-3133

 Email: info@creative-biomart.com  Fax: 1-631-938-8127

 45-1 Ramsey Road, Shirley, NY 11967, USA