

Recombinant Human SSB Protein, His-tagged

Cat. No. SSB-1240H Lot. No. (See product label)

SPECIFICATION

Product Overview	Recombinant Human SSB Protein (Met1-Thr401) with His tag was expressed in CHO.
Species	Human
Source	CHO
ProteinLength	Met1-Thr401
Description	<p>The protein encoded by this gene is involved in diverse aspects of RNA metabolism, including binding and protecting poly(U) termini of nascent RNA polymerase III transcripts from exonuclease digestion, processing 5' and 3' ends of pre-tRNA precursors, acting as an RNA chaperone, and binding viral RNAs associated with hepatitis C virus. Autoantibodies reacting with this protein are found in the sera of patients with Sjogren syndrome and systemic lupus erythematosus. Alternative promoter usage results in two different transcript variants which encode the same protein.</p>
Form	Freeze-dried powder
Molecular Mass	Predicted Molecular Mass: 47.8 kDa; Accurate Molecular Mass: 55 kDa
Purity	> 97%
Applications	Positive Control; Immunogen; SDS-PAGE; WB.

 Tel: 1-631-559-9269 1-516-512-3133

 Email: info@creative-biomart.com  Fax: 1-631-938-8127

 45-1 Ramsey Road, Shirley, NY 11967, USA

Stability	The thermal stability is described by the loss rate. The loss rate was determined by accelerated thermal degradation test, that is, incubate the protein at 37 centigrade for 48h, and no obvious degradation and precipitation were observed. The loss rate is less than 5% within the expiration date under appropriate storage condition.
Storage	Avoid repeated freeze/thaw cycles. Store at 2-8 centigrade for one month. Aliquot and store at -80 centigrade for 12 months.
Storage Buffer	PBS, pH7.4, containing 0.01% SKL, 1mM DTT, 5% Trehalose and Proclin300.
Reconstitution	Reconstitute in 10mM PBS (pH7.4) to a concentration of 0.1-1.0 mg/mL. Do not vortex.

GENE INFORMATION

Gene Name	SSB small RNA binding exonuclease protection factor La [Homo sapiens (human)]
Official Symbol	SSB
Synonyms	SSB; small RNA binding exonuclease protection factor La; La; LARP3; La/SSB; lupus La protein; La ribonucleoprotein domain family, member 3; SS-B; SS-B/La protein; Sjogren syndrome antigen B; autoantigen La; la autoantigen; lupus La antigen; sjoegren syndrome type B antigen
Gene ID	6741
mRNA Refseq	NM_003142
Protein Refseq	NP_003133
MIM	109090

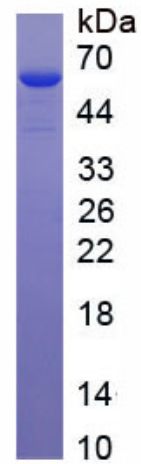
 Tel: 1-631-559-9269 1-516-512-3133

 Email: info@creative-biomart.com  Fax: 1-631-938-8127

 45-1 Ramsey Road, Shirley, NY 11967, USA

UniProt ID

P05455



 Tel: 1-631-559-9269 1-516-512-3133

 Email: info@creative-biomart.com  Fax: 1-631-938-8127

 45-1 Ramsey Road, Shirley, NY 11967, USA