

Recombinant Human SSB

Cat. No. SSB-150H Lot. No. (See product label)

SPECIFICATION

Product Overview	Recombinant Human LA/SS-B produced in Sf9 is a single, glycosylated, polypeptide chain having a calculated molecular mass of 47.6 kDa, is fused to a hexahistidine purification tag. The LA/SS-B is purified by proprietary chromatographic techniques.
Species	Human
Source	Sf9 Cells
Description	La is involved in diverse aspects of RNA metabolism, including binding and protecting 3-prime UUU(OH) elements of newly RNA polymerase III (see MIM 606007)-transcribed RNA, processing 5-prime and 3-prime ends of pre-tRNA precursors, acting as an RNA chaperone, and binding viral RNAs associated with hepatitis C virus. La protein was originally defined by its reactivity with autoantibodies from patients with Sjogren syndrome (MIM 270150) and systemic lupus erythematosus.
Physical Appearance	Sterile Filtered clear solution.
Formulation	The protein solution contains 20mM HEPES, pH 7.5, 400mM NaCl, 20% Glycerol.
Purity	Greater than 95.0% as determined by SDS-PAGE
Immunological functions	1. Binds IgG-type human auto-antibodies. 2. Standard ELISA test (checker-board analysis of positive/negative sera panels, immuno-dot test).
Coating	0.6-1.1 g/ml (depending on the type of ELISA plate and coating buffer). Suitable for

 Tel: 1-631-559-9269 1-516-512-3133

 Email: info@creative-biomart.com  Fax: 1-631-938-8127

 45-1 Ramsey Road, Shirley, NY 11967, USA

concentration biotinylation and iodination.

Stability Store at 4°C if entire vial will be used within 2-4 weeks. Store, frozen at -20°C for longer periods of time. Avoid multiple freeze-thaw cycles.

GENE INFORMATION

Gene Name [SSB Sjogren syndrome antigen B \(autoantigen La\) \[Homo sapiens \]](#)

Synonyms Sjogren syndrome antigen B (autoantigen La); La; LARP3; SSB; autoantigen La; SS-B/La protein; OTTHUMP00000204778; La ribonucleoprotein domain family, member 3; SS-B; La autoantigen; La ribonucleoprotein; Sjogren syndrome type B antigen

Gene ID [6741](#)

mRNA Refseq [NM_003142](#)

Protein Refseq [NP_003133](#)

MIM [109090](#)

UniProt ID [P05455](#)

Pathway Systemic lupus erythematosus

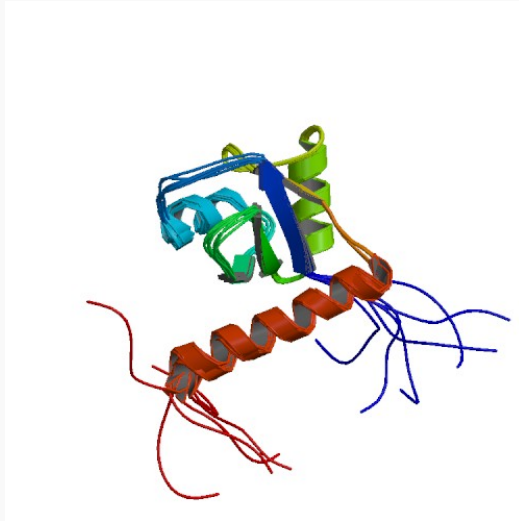
Function mRNA binding; nucleotide binding; protein binding; tRNA binding

 Tel: 1-631-559-9269 1-516-512-3133

 Email: info@creative-biomart.com  Fax: 1-631-938-8127

 45-1 Ramsey Road, Shirley, NY 11967, USA

PDB rendering based
on 1owx.



 Tel: 1-631-559-9269 1-516-512-3133

 Email: info@creative-biomart.com  Fax: 1-631-938-8127

 45-1 Ramsey Road, Shirley, NY 11967, USA