

Recombinant Full Length Human SSB Protein, C-Flag-tagged

Cat. No. SSB-864HFL Lot. No. (See product label)

SPECIFICATION

Product Overview	Recombinant Full Length Human SSB Protein, fused to Flag-tag at C-terminus, was expressed in Mammalian cells.
Species	Human
Source	Mammalian Cells
Description	The protein encoded by this gene is involved in diverse aspects of RNA metabolism, including binding and protecting poly(U) termini of nascent RNA polymerase III transcripts from exonuclease digestion, processing 5' and 3' ends of pre-tRNA precursors, acting as an RNA chaperone, and binding viral RNAs associated with hepatitis C virus. Autoantibodies reacting with this protein are found in the sera of patients with Sjogren syndrome and systemic lupus erythematosus. Alternative promoter usage results in two different transcript variants which encode the same protein.
Form	25 mM Tris HCl, pH 7.3, 100 mM glycine, 10% glycerol.
Molecular Mass	46.7 kDa
AA Sequence	MAENGDNEKMAALEAKICHQIEYYFGDFNLPRDKFLKEQIKLDEGWVPLEIMIKFNRL NRLTTDFNVIVE ALSKSKAELMEISEDKTKIRRRSPSKPLPEVTDEYKNDVKNRSVYIK GFPTDATLDDIKEWLEDKGVVNI QMRRTLHKAFKGSIFVVFDSIESAKKFVETPGQ KYKETDLLILFKDDYFAKKNEERKQNKVEAKLRAKQE QEAKQKLEEDAEMKSLEEKI GCLLKFSGLDDQTCREDLHILFSNHGEIKWIDFVRGAKEGIIILFKEKAK EALGKAKD

 Tel: 1-631-559-9269 1-516-512-3133

 Email: info@creative-biomart.com  Fax: 1-631-938-8127

 45-1 Ramsey Road, Shirley, NY 11967, USA

ANNGNLQLRNKEVTWEVLEGEVEKEALKKIIEDQQESLNKWKSKGRRFKGKGGKGNK
 AAQPGS
 GKGKVFQGGKTKFASDDEHDEHDENGATGPVKRAREETDKEEPASKQQKTENG
 AGDQTRTRPLEQKLISEEDLAANDILDYKDDDDKV

Purity > 80% as determined by SDS-PAGE and Coomassie blue staining.

Stability Stable for 12 months from the date of receipt of the product under proper storage and handling conditions. Avoid repeated freeze-thaw cycles.

Storage Store at -80 centigrade.

Concentration >50 ug/mL as determined by microplate BCA method.

Preparation Recombinant protein was captured through anti-DDK affinity column followed by conventional chromatography steps.

Protein Families Stem cell - Pluripotency, Transcription Factors

Protein Pathways Systemic lupus erythematosus

Full Length Full L.

GENE INFORMATION

Gene Name SSB small RNA binding exonuclease protection factor La [Homo sapiens (human)]

Official Symbol SSB

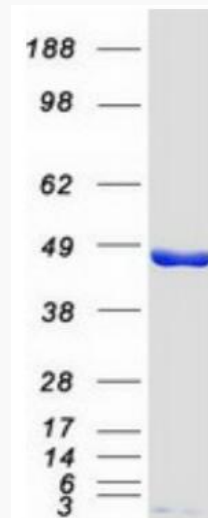
Synonyms La; LARP3; La/SSB

 Tel: 1-631-559-9269 1-516-512-3133

 Email: info@creative-biomart.com  Fax: 1-631-938-8127

 45-1 Ramsey Road, Shirley, NY 11967, USA

Gene ID	6741
mRNA Refseq	NM_003142.5
Protein Refseq	NP_003133.1
MIM	109090
UniProt ID	P05455



Coomassie blue staining of purified SSB protein.

Tel: 1-631-559-9269 1-516-512-3133

Email: info@creative-biomart.com Fax: 1-631-938-8127

45-1 Ramsey Road, Shirley, NY 11967, USA