

Recombinant Human SSFA2 protein, His & T7-tagged

Cat. No. SSFA2-5801H Lot. No. (See product label)

SPECIFICATION

Product Overview	Recombinant Human SSFA2 aa. (Ser276~Gly510 (Accession # P28290)) fused with N-terminal His & T7 tag was produced in E. coli cells.
Species	Human
Source	E.coli
ProteinLength	Ser276~Gly510
Form	Freeze-dried powder
Molecular Mass	Predicted Molecular Mass: 29.4kDa
Endotoxin	<1.0EU per 1g (determined by the LAL method)
Purity	>95%
Characteristic	The isoelectric point is 5.7.
Applications	SDS-PAGE; WB; ELISA; IP.
Stability	The thermal stability is described by the loss rate. The loss rate was determined by accelerated thermal degradation test, that is, incubate the protein at 37°C for 48h, and no obvious degradation and precipitation were observed. The loss rate is less than 5% within the expiration date under appropriate storage condition.

 Tel: 1-631-559-9269 1-516-512-3133

 Email: info@creative-biomart.com  Fax: 1-631-938-8127

 45-1 Ramsey Road, Shirley, NY 11967, USA

Storage	Avoid repeated freeze/thaw cycles. Store at 2-8°C for one month. Aliquot and store at -80°C for 12 months.
Storage buffer	Supplied as lyophilized form in 20mM Tris, 150mM NaCl, pH8.0, containing 1mM EDTA, 1mM DTT, 0.01% sarcosyl, 5% trehalose, and preservative
Reconstitution	Reconstitute in ddH ₂ O.

GENE INFORMATION

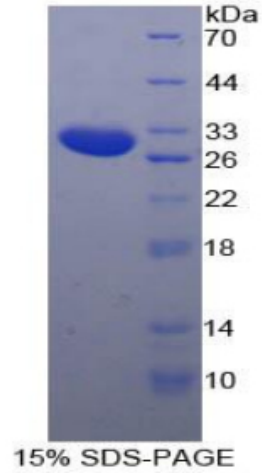
Gene Name	SSFA2 sperm specific antigen 2 [Homo sapiens (human)]
Official Symbol	SSFA2
Synonyms	CS1; CS-1; KRAP; SPAG13; KRAS-induced actin-interacting protein; cleavage signal-1 protein; ki-ras-induced actin-interacting protein; sperm associated antigen 13; sperm-specific antigen 2
Gene ID	6744
mRNA Refseq	NM_001130445.2
Protein Refseq	NP_001123917.1
UniProt ID	P28290

 Tel: 1-631-559-9269 1-516-512-3133

 Email: info@creative-biomart.com  Fax: 1-631-938-8127

 45-1 Ramsey Road, Shirley, NY 11967, USA

SDS-PAGE



 Tel: 1-631-559-9269 1-516-512-3133

 Email: info@creative-biomart.com  Fax: 1-631-938-8127

 45-1 Ramsey Road, Shirley, NY 11967, USA