

Recombinant Human SSH2 Protein, His-tagged

Cat. No. SSH2-1242H **Lot. No.** (See product label)

SPECIFICATION

Product Overview	Recombinant Human SSH2 Protein (Tyr1265-Met1423) with His tag was expressed in E. coli.
Species	Human
Source	E.coli
ProteinLength	Tyr1265-Met1423
Description	This gene encodes a protein tyrosine phosphatase that plays a key role in the regulation of actin filaments. The encoded protein dephosphorylates and activates cofilin, which promotes actin filament depolymerization. Alternative splicing results in multiple transcript variants.
Form	Freeze-dried powder
Molecular Mass	Predicted Molecular Mass: 21.4 kDa; Accurate Molecular Mass: 25 kDa
Purity	> 90%
Applications	Positive Control; Immunogen; SDS-PAGE; WB.
Stability	The thermal stability is described by the loss rate. The loss rate was determined by accelerated thermal degradation test, that is, incubate the protein at 37 centigrade for 48h, and no obvious degradation and precipitation were observed. The loss rate is

 Tel: 1-631-559-9269 1-516-512-3133

 Email: info@creative-biomart.com  Fax: 1-631-938-8127

 45-1 Ramsey Road, Shirley, NY 11967, USA

less than 5% within the expiration date under appropriate storage condition.

Storage

Avoid repeated freeze/thaw cycles. Store at 2-8 centigrade for one month. Aliquot and store at -80 centigrade for 12 months.

Storage Buffer

20mM Tris, 150mM NaCl, pH8.0, containing 1mM EDTA, 1mM DTT, 0.01% SKL, 5% Trehalose and Proclin300.

Reconstitution

Reconstitute in 20mM Tris, 150mM NaCl (pH8.0) to a concentration of 0.1-1.0 mg/mL. Do not vortex.

GENE INFORMATION

Gene Name

SSH2 slingshot homolog 2 (Drosophila) [Homo sapiens (human)]

Official Symbol

SSH2

Synonyms

SSH2; slingshot homolog 2 (Drosophila); protein phosphatase Slingshot homolog 2; KIAA1725; SSH-2L; hSSH-2L; slingshot 2; SSH-like protein 2; SSH-2; MGC78588;

Gene ID

85464

mRNA Refseq

NM_033389

Protein Refseq

NP_203747

MIM

606779

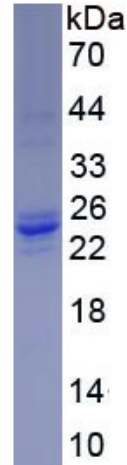
UniProt ID

Q76I76

 Tel: 1-631-559-9269 1-516-512-3133

 Email: info@creative-biomart.com  Fax: 1-631-938-8127

 45-1 Ramsey Road, Shirley, NY 11967, USA



Tel: 1-631-559-9269 1-516-512-3133

Email: info@creative-biomart.com Fax: 1-631-938-8127

45-1 Ramsey Road, Shirley, NY 11967, USA