

Recombinant Human SSR1 Protein, Myc/DDK-tagged, C13 and N15-labeled

Cat. No. SSR1-3704H **Lot. No.** (See product label)

SPECIFICATION

Product Overview

SSR1 MS Standard C13 and N15-labeled recombinant protein (NP_003135) with a C-terminal MYC/DDK tag, was expressed in HEK293 cells.

Species

Human

Source

HEK293

Description

The signal sequence receptor (SSR) is a glycosylated endoplasmic reticulum (ER) membrane receptor associated with protein translocation across the ER membrane. The SSR consists of 2 subunits, a 34-kD glycoprotein encoded by this gene and a 22-kD glycoprotein. This gene generates several mRNA species as a result of complex alternative polyadenylation. This gene is unusual in that it utilizes arrays of polyA signal sequences that are mostly non-canonical. Multiple transcript variants encoding different isoforms have been found for this gene.

Molecular Mass

32.2 kDa

AA Sequence

```
MRLLPRLLLLLLVFPATVLFRRGGPRGLLAVAQDLTEDEETVEDSIIEDDEDDEAEVEE
DEPTDLVEDKEEEDVSGEPEASPSADTTILFVKGEDFPANNIVKFLVGFTNKGTEDFI
VESLDASFRYPQDYQFYIQNFTALPLNTVVPPQRQATFEYSFIPAEPMGGRPFGLVI
NLNYKDLNGNVFQDAVFNQTVTVIEREDGLDGETIFMYMFLAGLGLLVIVGLHQLLES
RKRKRPIQKVEMGTSSQNDVDMSWIPQETLNQINKASPRRLPRKRAQKRSVGSDET
RTRPLEQKLISEEDLAANDILDYKDDDDKV
```

 Tel: 1-631-559-9269 1-516-512-3133

 Email: info@creative-biomart.com  Fax: 1-631-938-8127

 45-1 Ramsey Road, Shirley, NY 11967, USA

Purity	> 80% as determined by SDS-PAGE and Coomassie blue staining
Stability	Stable for 3 months from receipt of products under proper storage and handling conditions.
Storage	Store at -80 centigrade. Avoid repeated freeze-thaw cycles.
Concentration	50 µg/mL as determined by BCA
Storage Buffer	100 mM glycine, 25 mM Tris-HCl, pH 7.3.

GENE INFORMATION

Gene Name	SSR1 signal sequence receptor subunit 1 [Homo sapiens (human)]
Official Symbol	SSR1
Synonyms	SSR1; signal sequence receptor, alpha; translocon-associated protein subunit alpha; translocon associated protein alpha; TRAPA; SSR-alpha; TRAP alpha; TRAP-alpha; SSR alpha subunit; signal sequence receptor subunit alpha; translocon-associated protein alpha subunit; FLJ14232; FLJ22100; FLJ23034; FLJ78242; FLJ93042; DKFZp781N23103;
Gene ID	6745
mRNA Refseq	NM_003144
Protein Refseq	NP_003135
MIM	600868

 Tel: 1-631-559-9269 1-516-512-3133

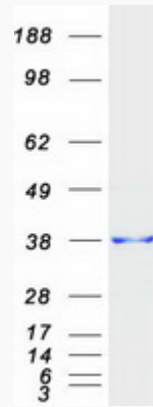
 Email: info@creative-biomart.com  Fax: 1-631-938-8127

 45-1 Ramsey Road, Shirley, NY 11967, USA

UniProt ID

P43307

SDS-PAGE



 Tel: 1-631-559-9269 1-516-512-3133

 Email: info@creative-biomart.com  Fax: 1-631-938-8127

 45-1 Ramsey Road, Shirley, NY 11967, USA