

# Recombinant Human SSR3 Protein, Myc/DDK-tagged, C13 and N15-labeled

**Cat. No.** SSR3-2399H    **Lot. No.** (See product label)

## SPECIFICATION

<b>Product Overview</b>	SSR3 MS Standard C13 and N15-labeled recombinant protein (NP_009038) with a C-terminal MYC/DDK tag, was expressed in HEK293 cells.
<b>Species</b>	Human
<b>Source</b>	HEK293
<b>Description</b>	The signal sequence receptor (SSR) is a glycosylated endoplasmic reticulum (ER) membrane receptor associated with protein translocation across the ER membrane. The SSR is comprised of four membrane proteins/subunits: alpha, beta, gamma, and delta. The first two are glycosylated subunits and the latter two are non-glycosylated subunits. This gene encodes the gamma subunit, which is predicted to span the membrane four times.
<b>Molecular Mass</b>	21.1 kDa
<b>AA Sequence</b>	MAPKGSSKQQSEEDLLLQDFSRNLSAKSSALFFGNAFIVSAIPIWLYWRIWHMDLIQS AVLYSVMTLVSTYLVAFAFKNVKFLKHKVAQKREDAVSKEVTRKLSADNRKMSR KEKDERILWKKNEVADYEATTFSTFYNNLFLVIVIVASFFILKNFNPTVNYILSISASS GLIALLSTGSKSGPTRTRPLEQKLISEEDLAANDILDYKDDDDKV
<b>Purity</b>	> 80% as determined by SDS-PAGE and Coomassie blue staining
<b>Stability</b>	Stable for 3 months from receipt of products under proper storage and handling

 Tel: 1-631-559-9269    1-516-512-3133

 Email: [info@creative-biomart.com](mailto:info@creative-biomart.com)     Fax: 1-631-938-8127

 45-1 Ramsey Road, Shirley, NY 11967, USA

conditions.

**Storage** Store at -80 centigrade. Avoid repeated freeze-thaw cycles.

**Concentration** 50 µg/mL as determined by BCA

**Storage Buffer** 100 mM glycine, 25 mM Tris-HCl, pH 7.3.

## GENE INFORMATION

**Gene Name** SSR3 signal sequence receptor subunit 3 [ Homo sapiens (human) ]

**Official Symbol** SSR3

**Synonyms** SSR3; signal sequence receptor subunit 3; TRAPG; translocon-associated protein subunit gamma; SSR gamma; TRAP-complex gamma subunit; TRAP-gamma; signal sequence receptor subunit gamma; signal sequence receptor, gamma (translocon-associated protein gamma); translocon-associated protein gamma subunit

**Gene ID** 6747

**mRNA Refseq** NM\_007107

**Protein Refseq** NP\_009038

**MIM** 606213

**UniProt ID** Q9UNL2

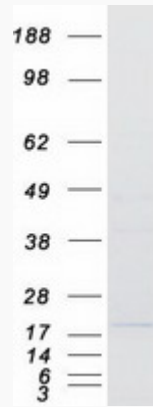
 Tel: 1-631-559-9269 1-516-512-3133

 Email: [info@creative-biomart.com](mailto:info@creative-biomart.com)  Fax: 1-631-938-8127

 45-1 Ramsey Road, Shirley, NY 11967, USA



SDS-PAGE



Tel: 1-631-559-9269 1-516-512-3133

Email: [info@creative-biomart.com](mailto:info@creative-biomart.com) Fax: 1-631-938-8127

45-1 Ramsey Road, Shirley, NY 11967, USA