

Active Recombinant Human SSTR2 full length Transmembrane Protein, His-tagged

Cat. No. SSTR2-1021H Lot. No. (See product label)

SPECIFICATION

Product Overview	Active Recombinant Human SSTR2 Protein(P30874)(1-369aa), fused with N-terminal His tag, was expressed in E.coli.
Species	Human
Source	E.coli
ProteinLength	1-369aa
Form	If the delivery form is liquid, the default storage buffer is Tris/PBS-based buffer, 5%-50% glycerol.If the delivery form is lyophilized powder, the buffer before lyophilization is Tris/PBS-based buffer, 6% Trehalose.
Bio-activity	Human SSTR2 Full Length Protein captured on LifeDisc TM COOH chip (in presence of FOS-12) can bind [Tyr3]Octreotate with an affinity constant of 22.9 μ M as detected by MetaSPR Assay (WeSPRTM One).
Molecular Mass	47.4 kDa
AASequence	MDMADEPLNGSHTWLSIPFDLNGSVVSTNTSNQTEPYD LTSNAVLTFIYFVVCIIGL CGNTLVIIYVILRYAKMKTITNIYILNLAIADL FMLGLPFLAMQVALVHWPF GKAI CRVV MTVDGINQFTSIFCLTVMSIDRYLAVVHPIKSAKWRRPRTAKMITMAVWGV SLLVILPI MIYAGLR SNQWGRSSCTINWPGESGAWYTGFIYTFILGFLVPLTIICLCYLFIIIKVKSS GIRVGSSKRKKSEKKVTRMVSIVVAVFICWLPFYIFNVSSVSMASPTPALKGMFDF

 Tel: 1-631-559-9269 1-516-512-3133

 Email: info@creative-biomart.com  Fax: 1-631-938-8127

 45-1 Ramsey Road, Shirley, NY 11967, USA

VVVLTYANSCANPILYAFLSDNFKKSFQNVLCLVKVSGTDDGERSDSKQDKSRLNET
TETQRTLLNGDLQTSI

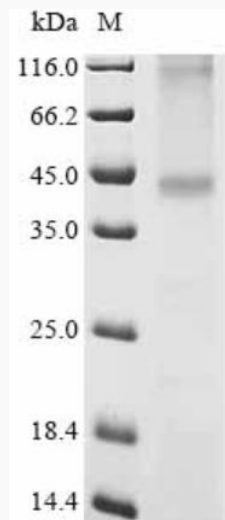
Purity Greater than 85% as determined by SDS-PAGE.

Storage Store at -20°C/-80°C upon receipt, aliquoting is necessary for mutiple use. Avoid repeated freeze-thaw cycles.

Reconstitution We recommend that this vial be briefly centrifuged prior to opening to bring the contents to the bottom. Please reconstitute protein in deionized sterile water to a concentration of 0.1-1.0 mg/mL. We recommend to add 5-50% of glycerol (final concentration) and aliquot for long-term storage at -20°C/-80°C.

UniProt ID-Weblink <https://www.uniprot.org/uniprot/>

SDS-PAGE

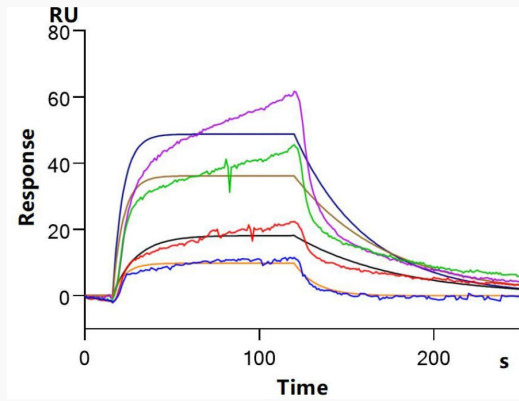


 Tel: 1-631-559-9269 1-516-512-3133

 Email: info@creative-biomart.com  Fax: 1-631-938-8127

 45-1 Ramsey Road, Shirley, NY 11967, USA

Activity



 Tel: 1-631-559-9269 1-516-512-3133

 Email: info@creative-biomart.com  Fax: 1-631-938-8127

 45-1 Ramsey Road, Shirley, NY 11967, USA