

Recombinant Full Length Human SSTR2 Protein, C-Flag-tagged

Cat. No. SSTR2-147HFL **Lot. No.** (See product label)

SPECIFICATION

Product Overview	Recombinant Full Length Human SSTR2 Protein, fused to Flag-tag at C-terminus, was expressed in Mammalian cells.
Species	Human
Source	Mammalian Cells
Description	Somatostatin acts at many sites to inhibit the release of many hormones and other secretory proteins. The biologic effects of somatostatin are probably mediated by a family of G protein-coupled receptors that are expressed in a tissue-specific manner. SSTR2 is a member of the superfamily of receptors having seven transmembrane segments and is expressed in highest levels in cerebrum and kidney.
Form	25 mM Tris HCl, pH 7.3, 100 mM glycine, 10% glycerol.
Molecular Mass	41.2 kDa
AA Sequence	MDMADEPLNGSHTWLSIPFDLNGSVVSTNTSNQTEPYD LTSNAVLTFIYFVVCIIGL CGNTLVIYVILR YAKMKTITNIYILNLAIADL FMLGLPFLAMQVALVHWPFGKAICRVV MTVDGINQFTSIFCLTVMSIDR YLAVVHPIKSAKWRRPRTAKMITMAVWGVSLLVILPI MIYAGLRSNQWGRSSCTINWPGESGAWYTGFI YTFILGFLVPLTIICLCYLFIIIKVKS SGIRVGSSKRKKSEKKVTRMVSIVVAVFIFCWLPFYIFNVSSV SMAISPTPALKGMFD FVVVLTYANSCANPILYAF LSDNFKKS FQNVLCLVKVSGTDDGERSDSKQDKSRL NETTETQRTLLNGDLQTSITRTRPLEQKLISEEDLAANDILDYKDDDDKV

 Tel: 1-631-559-9269 1-516-512-3133

 Email: info@creative-biomart.com  Fax: 1-631-938-8127

 45-1 Ramsey Road, Shirley, NY 11967, USA

Purity	> 80% as determined by SDS-PAGE and Coomassie blue staining.
Stability	Stable for 12 months from the date of receipt of the product under proper storage and handling conditions. Avoid repeated freeze-thaw cycles.
Storage	Store at -80 centigrade.
Concentration	>50 ug/mL as determined by microplate BCA method.
Preparation	Recombinant protein was captured through anti-DDK affinity column followed by conventional chromatography steps.
Protein Families	Druggable Genome, GPCR, Transmembrane
Protein Pathways	Neuroactive ligand-receptor interaction
Full Length	Full L.

GENE INFORMATION

Gene Name	SSTR2 somatostatin receptor 2 [Homo sapiens (human)]
Official Symbol	SSTR2
Synonyms	SST2
Gene ID	6752
mRNA Refseq	NM_001050.3
Protein Refseq	NP_001041.1

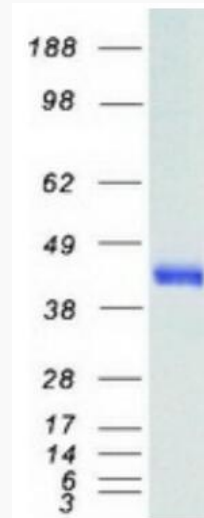
 Tel: 1-631-559-9269 1-516-512-3133

 Email: info@creative-biomart.com  Fax: 1-631-938-8127

 45-1 Ramsey Road, Shirley, NY 11967, USA

MIM 182452

UniProt ID P30874



Coomassie blue staining of purified SSTR2 protein.

Tel: 1-631-559-9269 1-516-512-3133

Email: info@creative-biomart.com Fax: 1-631-938-8127

45-1 Ramsey Road, Shirley, NY 11967, USA