

Recombinant Human SSTR5 protein, His-tagged

Cat. No. SSTR5-4519H Lot. No. (See product label)

SPECIFICATION

Product Overview	Recombinant Human SSTR5 protein(P35346)(1-364 aa), fused with C-terminal His tag, was expressed in Mammalian Cells.
Species	Human
Source	Mammalian Cells
ProteinLength	1-364 aa
Form	For liquid formulations, the standard storage buffer consists of a Tris or PBS based solution supplemented with 5-50% glycerol. When provided as lyophilized powder, the product undergoes freeze-drying from a Tris- or PBS-based formulation containing 6% trehalose, adjusted to pH 8.0 prior to the lyophilization process.
Molecular Mass	40.6 kDa
AASequence	MEPLFPASTPSWNASSPGAASGGGDNRTL VGPAPSAGARAVLVPVLYLLVCAAGL GGNTLVIYVVLRF AKMKTVTNIYILNLAVADVLYMLGLPFLATQNAASF WPF G PVL CR LVMTLDGVNQFTSVFCLTVMSVDRYLAVVHPLSSARWRRPRVAKLASAAAWVLSLC MSLPLLVFADVQEGGTCNASWPEPVGLWGAVFIIYTAVLGGFFAPLLVICLCYLLIVVKV RAAGVRVGCVRRRSERK VTRMVLVVVLFVAGCWLPFFFTVNIVNLAVALPQEPASAG LYFFVVILSYANSCANPVLYGFLSDNFRQSFQKVLCLRK GSGAKDADATEPRPDRIR QQEATPPAHRAAANGLMQTSKL
Storage	Store at -20°C/-80°C upon receipt, aliquoting is necessary for multiple use. Avoid

 Tel: 1-631-559-9269 1-516-512-3133

 Email: info@creative-biomart.com  Fax: 1-631-938-8127

 45-1 Ramsey Road, Shirley, NY 11967, USA

repeated freeze-thaw cycles.

Reconstitution


Please reconstitute protein in deionized sterile water to a concentration of 0.1-1.0 mg/mL. Aliquot for long-term storage at -80°C.

GENE INFORMATION

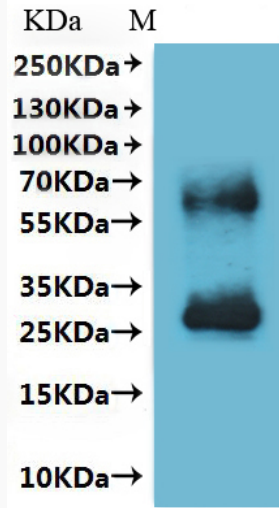
Gene Name	SSTR5 somatostatin receptor 5 [Homo sapiens]
Official Symbol	SSTR5
Synonyms	SSTR5; somatostatin receptor 5; somatostatin receptor type 5; somatostatin receptor subtype 5; SS-5-R;
Gene ID	6755
mRNA Refseq	NM_001053
Protein Refseq	NP_001044
MIM	182455
UniProt ID	P35346


 Tel: 1-631-559-9269 1-516-512-3133

 Email: info@creative-biomart.com  Fax: 1-631-938-8127


 45-1 Ramsey Road, Shirley, NY 11967, USA

WB



 Tel: 1-631-559-9269 1-516-512-3133

 Email: info@creative-biomart.com  Fax: 1-631-938-8127

 45-1 Ramsey Road, Shirley, NY 11967, USA