

Recombinant Full Length Human SSX2 Protein, C-Flag-tagged

Cat. No. SSX2-2022HFL Lot. No. (See product label)

SPECIFICATION

Product Overview	Recombinant Full Length Human SSX2 Protein, fused to Flag-tag at C-terminus, was expressed in Mammalian cells.
Species	Human
Source	Mammalian Cells
Description	The product of this gene belongs to the family of highly homologous synovial sarcoma X (SSX) breakpoint proteins. These proteins may function as transcriptional repressors. They are also capable of eliciting spontaneous humoral and cellular immune responses in cancer patients, and are potentially useful targets in cancer vaccine-based immunotherapy. This gene, and also the SSX1 and SSX4 family members, have been involved in t(X;18)(p11.2;q11.2) translocations that are characteristically found in all synovial sarcomas. This translocation results in the fusion of the synovial sarcoma translocation gene on chromosome 18 to one of the SSX genes on chromosome X. The encoded hybrid proteins are likely responsible for transforming activity. Alternative splicing of this gene results in multiple transcript variants. This gene also has an identical duplicate, GeneID: 727837, located about 45 kb downstream in the opposite orientation on chromosome X.
Form	25 mM Tris HCl, pH 7.3, 100 mM glycine, 10% glycerol.
Molecular Mass	25 kDa
AA Sequence	MNGDDAFARRPTVGAQIPEKIQKAFDDIAKYFSKEEWEKMKASEKIFYVYMKRKYEA

 Tel: 1-631-559-9269 1-516-512-3133

 Email: info@creative-biomart.com  Fax: 1-631-938-8127

 45-1 Ramsey Road, Shirley, NY 11967, USA

MTKLGFKATLPPF MCNKRAEDFQGNDLDNDPNRGNQVERPQMTFGRLQGISPKIM
 PKKPAEEGNDSEEVPEASGPQNDGKELC PPGKPTTSEKIHERSGNREAQEKEERR
 GTAHRWSSQNTHNIGRFSLSMGAHVHGTPKTITHNRDPKGGN MPGPTDCVRENS
 W TRTRPLEQKLISEEDLAANDILDYKDDDDKV

Purity > 80% as determined by SDS-PAGE and Coomassie blue staining.

Stability Stable for 12 months from the date of receipt of the product under proper storage and handling conditions. Avoid repeated freeze-thaw cycles.

Storage Store at -80 centigrade.

Concentration >50 ug/mL as determined by microplate BCA method.

Preparation Recombinant protein was captured through anti-DDK affinity column followed by conventional chromatography steps.

Protein Families Druggable Genome, Transcription Factors

Full Length Full L.

GENE INFORMATION

Gene Name [SSX2 SSX family member 2 \[Homo sapiens \(human\) \]](#)

Official Symbol [SSX2](#)

Synonyms SSX; HD21; CT5.2; CT5.2A; HOM-MEL-40

Gene ID [6757](#)

 Tel: 1-631-559-9269 1-516-512-3133

 Email: info@creative-biomart.com  Fax: 1-631-938-8127

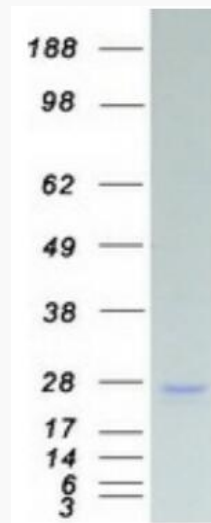
 45-1 Ramsey Road, Shirley, NY 11967, USA

mRNA Refseq [NM_003147.6](#)

Protein Refseq [NP_003138.3](#)

MIM [300192](#)

UniProt ID [Q16385](#)



Coomassie blue staining of purified SSX2 protein.

 Tel: 1-631-559-9269 1-516-512-3133

 Email: info@creative-biomart.com  Fax: 1-631-938-8127

 45-1 Ramsey Road, Shirley, NY 11967, USA