

# Recombinant Human SSX2 Protein, Myc/DDK-tagged, C13 and N15-labeled

**Cat. No.** SSX2-737H    **Lot. No.** (See product label)

## SPECIFICATION

<b>Product Overview</b>	SSX2 MS Standard C13 and N15-labeled recombinant protein (NP_783629) with a C-terminal MYC/DDK tag, was expressed in HEK293 cells.
<b>Species</b>	Human
<b>Source</b>	HEK293
<b>Description</b>	The product of this gene belongs to the family of highly homologous synovial sarcoma X (SSX) breakpoint proteins. These proteins may function as transcriptional repressors. They are also capable of eliciting spontaneous humoral and cellular immune responses in cancer patients, and are potentially useful targets in cancer vaccine-based immunotherapy. This gene, and also the SSX1 and SSX4 family members, have been involved in t(X;18)(p11.2;q11.2) translocations that are characteristically found in all synovial sarcomas. This translocation results in the fusion of the synovial sarcoma translocation gene on chromosome 18 to one of the SSX genes on chromosome X. The encoded hybrid proteins are likely responsible for transforming activity. Alternative splicing of this gene results in multiple transcript variants. This gene also has an identical duplicate, GeneID: 727837, located about 45 kb downstream in the opposite orientation on chromosome X.
<b>Molecular Mass</b>	21.6 kDa
<b>AA Sequence</b>	MNGDDAFARRPTVGAQIPEKIQKAFDDIAKYFSKEEWEKMKASEKIFYVYMKRKYEA

 Tel: 1-631-559-9269    1-516-512-3133

 Email: [info@creative-biomart.com](mailto:info@creative-biomart.com)     Fax: 1-631-938-8127

 45-1 Ramsey Road, Shirley, NY 11967, USA

MTKLGFKATLPPFMCNKRAEDFQGNDLDNDPNRGNQVERPQMTFGRLQGISP  
 PKKPAEEGNDSEEVPEASGPQNDGKELCPPGKPTTSEKIHERSGPKRGEHAWTHR  
 LPERKQLVIYEEISDPEEDDETRTRPLEQKLISEEDLAANDILDYKDDDDKV

**Purity** > 80% as determined by SDS-PAGE and Coomassie blue staining

**Stability** Stable for 3 months from receipt of products under proper storage and handling conditions.

**Storage** Store at -80 centigrade. Avoid repeated freeze-thaw cycles.

**Concentration** 50 µg/mL as determined by BCA

**Storage Buffer** 100 mM glycine, 25 mM Tris-HCl, pH 7.3.

## GENE INFORMATION

**Gene Name** [SSX2 SSX family member 2 \[ Homo sapiens \(human\) \]](#)

**Official Symbol** [SSX2](#)

**Synonyms** SSX2; synovial sarcoma, X breakpoint 2; SSX; protein SSX2; cancer/testis antigen family 5; member 2a; CT5.2a; HD21; HOM MEL 40; MGC3884; MGC15364; MGC119055; sarcoma; synovial; X chromosome related 2; synovial sarcoma; X breakpoint 2; isoform b; X breakpoint 2B; CT5.2; tumor antigen HOM-MEL-40; cancer/testis antigen 5.2; synovial sarcoma, X breakpoint 2B; cancer/testis antigen family 5, member 2a; sarcoma, synovial, X-chromosome-related 2; synovial sarcoma, X breakpoint 2, isoform b; SSX2B; HOM-MEL-40;

**Gene ID** [6757](#)

 Tel: 1-631-559-9269 1-516-512-3133

 Email: [info@creative-biomart.com](mailto:info@creative-biomart.com)  Fax: 1-631-938-8127

 45-1 Ramsey Road, Shirley, NY 11967, USA

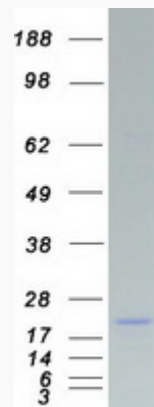
mRNA Refseq [NM\\_175698](#)

Protein Refseq [NP\\_783629](#)

MIM [300192](#)

UniProt ID [Q16385](#)

SDS-PAGE



 Tel: 1-631-559-9269 1-516-512-3133

 Email: [info@creative-biomart.com](mailto:info@creative-biomart.com)  Fax: 1-631-938-8127

 45-1 Ramsey Road, Shirley, NY 11967, USA