

## Active Recombinant Human ST14 Protein, His-tagged

Cat. No. ST14-03H Lot. No. (See product label)

### SPECIFICATION

<b>Product Overview</b>	Recombinant human matriptase (aa 596-855) fused at the N-terminus to a His-tag.
<b>Species</b>	Human
<b>ProteinLength</b>	596-855 a.a.
<b>Description</b>	The protein encoded by this gene is an epithelial-derived, integral membrane serine protease. This protease forms a complex with the Kunitz-type serine protease inhibitor, HAI-1, and is found to be activated by sphingosine 1-phosphate. This protease has been shown to cleave and activate hepatocyte growth factor/scattering factor, and urokinase plasminogen activator, which suggest the function of this protease as an epithelial membrane activator for other proteases and latent growth factors. The expression of this protease has been associated with breast, colon, prostate, and ovarian tumors, which implicates its role in cancer invasion, and metastasis.
<b>Form</b>	Liquid
<b>Bio-activity</b>	~2.5U/μL. One unit is defined as the amount of enzyme that releases 10 pmol of AMC per min. at 37 centigrade in the presence of 50μM of Boc-Gln-Ala-Arg-AMC.
<b>Molecular Mass</b>	~25 kDa
<b>Purity</b>	≥ 98% (SDS-PAGE)

 Tel: 1-631-559-9269 1-516-512-3133

 Email: [info@creative-biomart.com](mailto:info@creative-biomart.com)  Fax: 1-631-938-8127

 45-1 Ramsey Road, Shirley, NY 11967, USA

<b>Stability</b>	Stable for at least 6 months when stored at -20 centigrade. Do not store diluted solutions.
<b>Storage</b>	Short Term Storage: -20 centigrade Long Term Storage: -80 centigrade
<b>Concentration</b>	100nM
<b>Storage Buffer</b>	100mM TRIS, pH 8.0, containing 200mM sodium chloride, 1mM β-mercaptoethanol and 10% glycerol.
<b>Shipping</b>	Shipped on Dry Ice

## GENE INFORMATION

<b>Gene Name</b>	ST14 ST14 transmembrane serine protease matriptase [ Homo sapiens (human) ]
<b>Official Symbol</b>	ST14
<b>Synonyms</b>	ST14; ST14 transmembrane serine protease matriptase; HAI; CAP3; MTSP1; SNC19; ARCI11; MT-SP1; PRSS14; TADG15; TMPRSS14; suppressor of tumorigenicity 14 protein; channel-activating protein 3; membrane-type serine protease 1; prostamin; serine protease 14; serine protease TADG-15; suppression of tumorigenicity 14 (colon carcinoma); suppression of tumorigenicity 14 (colon carcinoma, matriptase, epithin); tumor associated differentially expressed gene 15 protein; EC 3.4.21.109
<b>Gene ID</b>	6768
<b>mRNA Refseq</b>	NM_021978

 Tel: 1-631-559-9269 1-516-512-3133

 Email: [info@creative-biomart.com](mailto:info@creative-biomart.com)  Fax: 1-631-938-8127

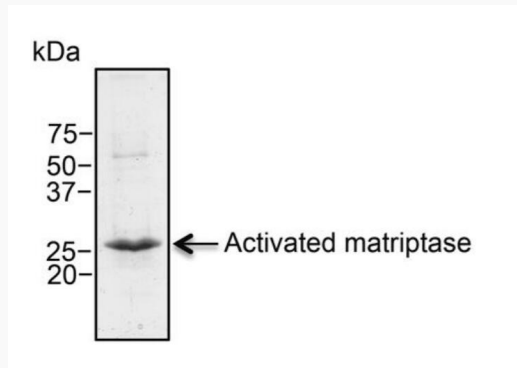
 45-1 Ramsey Road, Shirley, NY 11967, USA

**Protein Refseq** NP\_068813

**MIM** 606797

**UniProt ID** Q9Y5Y6

**SDS-PAGE**



 Tel: 1-631-559-9269 1-516-512-3133

 Email: [info@creative-biomart.com](mailto:info@creative-biomart.com)  Fax: 1-631-938-8127

 45-1 Ramsey Road, Shirley, NY 11967, USA