

Recombinant Human STAB1 protein, His-tagged

Cat. No. STAB1-1243H Lot. No. (See product label)

SPECIFICATION

Product Overview	Recombinant Human STAB1 protein(Tyr356~Ser665), fused with N-terminal His Tag, was expressed in E.coli.
Species	Human
Source	E.coli
ProteinLength	Tyr356~Ser665
Form	PBS, pH7.4, containing 0.01% SKL, 1mM DTT, 5% Trehalose and Proclin300.
Molecular Mass	68kDa
Endotoxin	<1.0EU per 1g (determined by the LAL method)
Purity	> 95%
Storage	Avoid repeated freeze/thaw cycles. Store at 2-8°C for one month. Aliquot and store at -80°C for 12 months.
Reconstitution	Reconstitute in ddH ₂ O to a concentration of 0.1-0.5 mg/mL. Do not vortex.

GENE INFORMATION

Gene Name STAB1 stabilin 1 [Homo sapiens]

 Tel: 1-631-559-9269 1-516-512-3133

 Email: info@creative-biomart.com  Fax: 1-631-938-8127

 45-1 Ramsey Road, Shirley, NY 11967, USA

Official Symbol	STAB1
Synonyms	STAB1; stabilin 1; stabilin-1; CLEVER 1; common lymphatic endothelial and vascular endothelial receptor 1; fasciclin egf like; laminin type egf like; and link domain containing scavenger receptor 1; FEEL 1; FELE 1; FEX1; KIAA0246; MS 1 antigen; STAB 1; MS-1 antigen; common lymphatic endothelial and vascular endothelial receptor-1; fasciclin egf-like, laminin-type egf-like, and link domain-containing scavenger receptor-1; fasciclin, EGF-like, laminin-type EGF-like and link domain-containing scavenger receptor 1; FEEL-1; FELE-1; STAB-1; CLEVER-1;
Gene ID	23166
mRNA Refseq	NM_015136
Protein Refseq	NP_055951
MIM	608560
UniProt ID	Q9NY15

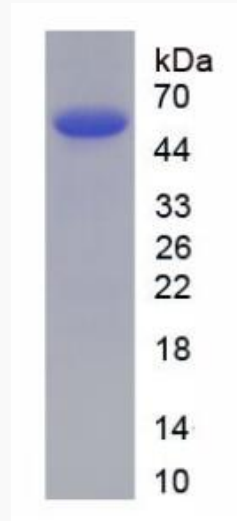
 Tel: 1-631-559-9269 1-516-512-3133

 Email: info@creative-biomart.com  Fax: 1-631-938-8127

 45-1 Ramsey Road, Shirley, NY 11967, USA



SDS-PAGE



Tel: 1-631-559-9269 1-516-512-3133

Email: info@creative-biomart.com Fax: 1-631-938-8127

45-1 Ramsey Road, Shirley, NY 11967, USA