

## Recombinant Human STAC3 protein, GST-tagged

**Cat. No.** STAC3-39H    **Lot. No.** (See product label)

### SPECIFICATION

**Product Overview**      Recombinant Human STAC3(1 a.a. - 325 a.a.) fused with GST tag at N-terminal was expressed in Wheat Germ.

**Species**                      Human

**Source**                        Wheat Germ

**ProteinLength**              1 a.a. - 325 a.a.

**Description**                The protein encoded by this gene is a component of the excitation-contraction coupling machinery of muscles. This protein is a member of the Stac gene family and contains an N-terminal cysteine-rich domain and two SH3 domains. Mutations in this gene are a cause of Native American myopathy.

**Form**                            50 mM Tris-HCl, 10 mM reduced Glutathione, pH=8.0 in the elution buffer.

**Molecular Mass**            61.49 kDa

**AA Sequence**

```
MELPPEPQANGEAVGAGGGPIYYIYEEEEEEEEEEEEPPPEPKLVNDKPHKFKDH
FFKKPKFCDVCARMIVLNNKFGLRCKNCKTNIHEHCQSYVEMQRCFGKIPPGFHRA
YSSPLYSNQQYACVKDLSAANRNDPVFETLRTGVIMANKERKKGQADKKNPVAAM
MEEEPESARPEEGKPKQDGNPEGDKKAEKKTTPDDKHKQPGFQQSHYFVALYRFKAL
EKDDLDFPPGEKITVIDDSNEEWWRGKIGEKVGGFFPPNFIRVRAGERVHRVTRSFV
GNREIGQITLKKDQIVVQKGDEAGGYVKVYTGRKVGLFPTDFLEEI
```

 Tel: 1-631-559-9269    1-516-512-3133

 Email: [info@creative-biomart.com](mailto:info@creative-biomart.com)     Fax: 1-631-938-8127

 45-1 Ramsey Road, Shirley, NY 11967, USA

**Applications** Enzyme-linked Immunoabsorbent Assay; Western Blot (Recombinant protein); Antibody Production; Protein Array

**Notes** Best use within three months from the date of receipt of this protein.

**Storage** Store at -80 centigrade. Aliquot to avoid repeated freezing and thawing.

## GENE INFORMATION

**Gene Name** STAC3 SH3 and cysteine rich domain 3 [ Homo sapiens ]

**Official Symbol** STAC3

**Synonyms** STAC3; SH3 and cysteine rich domain 3; SH3 and cysteine-rich domain-containing protein 3; MGC2793;

**Gene ID** 246329

**mRNA Refseq** NM\_145064

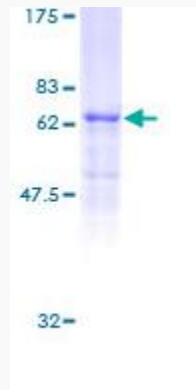
**Protein Refseq** NP\_659501

**UniProt ID** Q96MF2

 Tel: 1-631-559-9269 1-516-512-3133

 Email: [info@creative-biomart.com](mailto:info@creative-biomart.com)  Fax: 1-631-938-8127

 45-1 Ramsey Road, Shirley, NY 11967, USA



 Tel: 1-631-559-9269 1-516-512-3133

 Email: [info@creative-biomart.com](mailto:info@creative-biomart.com)  Fax: 1-631-938-8127

 45-1 Ramsey Road, Shirley, NY 11967, USA