

Recombinant Human STAG2 Protein, His-tagged

Cat. No. STAG2-2740H Lot. No. (See product label)

SPECIFICATION

Product Overview	Recombinant Human STAG2 Protein (Met1-Leu268) with a N-His tag was expressed in E. coli.
Species	Human
Source	E.coli
ProteinLength	Met1-Leu268
Description	The protein encoded by this gene is a subunit of the cohesin complex, which regulates the separation of sister chromatids during cell division. Targeted inactivation of this gene results in chromatid cohesion defects and aneuploidy, suggesting that genetic disruption of cohesin is a cause of aneuploidy in human cancer. Alternatively spliced transcript variants encoding different isoforms have been found for this gene.
Form	Freeze-dried powder
Molecular Mass	Predicted Molecular Mass: 33.9 kDa Accurate Molecular Mass: 38 kDa
Endotoxin	<1.0 EU per 1g (determined by the LAL method).
Purity	> 95%
Applications	Positive Control; Immunogen; SDS-PAGE; WB.

 Tel: 1-631-559-9269 1-516-512-3133

 Email: info@creative-biomart.com  Fax: 1-631-938-8127

 45-1 Ramsey Road, Shirley, NY 11967, USA

Stability	The thermal stability is described by the loss rate. The loss rate was determined by accelerated thermal degradation test, that is, incubate the protein at 37 centigrade for 48h, and no obvious degradation and precipitation were observed. The loss rate is less than 5% within the expiration date under appropriate storage condition.
Storage	Avoid repeated freeze/thaw cycles. Store at 2-8 centigrade for one month. Aliquot and store at -80 centigrade for 12 months.
Storage Buffer	PBS, pH7.4, containing 0.01% SKL, 1mM DTT, 5% Trehalose and Proclin300.
Reconstitution	Reconstitute in 20mM Tris, 150mM NaCl (pH8.0) to a concentration of 0.1-1.0 mg/mL. Do not vortex.

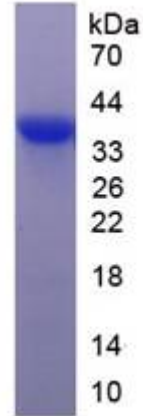
GENE INFORMATION

Gene Name	STAG2 stromal antigen 2 [Homo sapiens (human)]
Official Symbol	STAG2
Synonyms	STAG2; stromal antigen 2; cohesin subunit SA-2; SA 2; SCC3B; SCC3 homolog 2; SA2; SA-2; bA517O1.1; FLJ25871; DKFZp686P168; DKFZp781H1753;
Gene ID	10735
mRNA Refseq	NM_001042749
Protein Refseq	NP_001036214
MIM	300826
UniProt ID	Q8N3U4

 Tel: 1-631-559-9269 1-516-512-3133

 Email: info@creative-biomart.com  Fax: 1-631-938-8127

 45-1 Ramsey Road, Shirley, NY 11967, USA



 Tel: 1-631-559-9269 1-516-512-3133

 Email: info@creative-biomart.com  Fax: 1-631-938-8127

 45-1 Ramsey Road, Shirley, NY 11967, USA