

Active Recombinant Full Length Human STAT1 Protein, C-Flag-tagged

Cat. No. STAT1-232HFL Lot. No. (See product label)

SPECIFICATION

Product Overview	Recombinant Full Length Human STAT1 Protein, fused to Flag-tag at C-terminus, was expressed in Mammalian cells.
Species	Human
Source	Mammalian Cells
Description	<p>The protein encoded by this gene is a member of the STAT protein family. In response to cytokines and growth factors, STAT family members are phosphorylated by the receptor associated kinases, and then form homo- or heterodimers that translocate to the cell nucleus where they act as transcription activators. The protein encoded by this gene can be activated by various ligands including interferon-alpha, interferon-gamma, EGF, PDGF and IL6. This protein mediates the expression of a variety of genes, which is thought to be important for cell viability in response to different cell stimuli and pathogens. The protein plays an important role in immune responses to viral, fungal and mycobacterial pathogens. Mutations in this gene are associated with Immunodeficiency 31B, 31A, and 31C.</p>
Form	25 mM Tris HCl, pH 7.3, 100 mM glycine, 10% glycerol.
Bio-activity	Enzyme substrate
Molecular Mass	87.2 kDa

 Tel: 1-631-559-9269 1-516-512-3133

 Email: info@creative-biomart.com  Fax: 1-631-938-8127

 45-1 Ramsey Road, Shirley, NY 11967, USA

AA Sequence

MSQWYELQQLDSEKFLQVHQLYDDSFPMERQYLAQWLEKQDWEHAANDVSFATI
 RFHDLLSQLDDQYSR FSLENNFLLQHNIRKSKRNLDNFQEDPIQMSMIIYSCLKEE
 RKILENAQRFNQAQSGNIQSTVMLDKQK ELDSKVRNVKDKVMCIEHEIKSLEDLQDE
 YDFKCKTLQNRHEHETNGVAKSDQKQEQQLLLKMYLMLDNKR KEVVHKIIELLNVT
 TQNALINDELVEWKRRQQSACIGGPPNACLDQLQNWFTIVAESLQQVRQQLKKL EE
 LEQKYTYEHDPITKNKQVLWDRTFSLFQQLIQSSFVVERQPCMPHTPQRPLVLKTGV
 QFTVKLRLLVK LQELNYNLKVKVLFDKDVNERNTVKGFRKFNILGHTTKVMNMEEST
 NGSLAAEFRHLQKEQKNAGTRTN EGPLIVTEELHSLSFETQLCQPGLVIDLETTSLP
 VVVISNVSQPSGWASILWYNMLVAEPRNLSFFLTP PCARWAQLSEVLSWQFSSVT
 KRGLNVDQLNMLGEKLLGPNASPDGLIPWTRFCKENINDKNFPFWLWIES ILELIKK
 HLLPLWNDGCIMGFISKERERALLKDQQPGTFLRFSESSREGAITFTWVERSQNGG
 EPDFHA VEPYTKKELSAVTFPDIIRNYKVMMAENIPENPLKYLYPNIDKDHAFGKYYS
 RPKEAPEPEMELDGPKGTG
 YIKTELISVSEVHPSRLQTTDNLLPMSPEEFDEVSRIVGSVEFDSMMNTVTRTRPLEQ
 KLISEEDLAANDILDYKDDDDKV

Purity

> 80% as determined by SDS-PAGE and Coomassie blue staining.

Stability

Stable for 12 months from the date of receipt of the product under proper storage and handling conditions. Avoid repeated freeze-thaw cycles.

Storage

Store at -80 centigrade.

Concentration

>50 ug/mL as determined by microplate BCA method.

Preparation

Recombinant protein was captured through anti-DDK affinity column followed by conventional chromatography steps.

Protein Families

Druggable Genome, Transcription Factors

 Tel: 1-631-559-9269 1-516-512-3133

 Email: info@creative-biomart.com  Fax: 1-631-938-8127

 45-1 Ramsey Road, Shirley, NY 11967, USA

Protein Pathways Chemokine signaling pathway, Jak-STAT signaling pathway, Pancreatic cancer, Pathways in cancer, Toll-like receptor signaling pathway

Full Length Full L.

GENE INFORMATION

Gene Name STAT1 signal transducer and activator of transcription 1 [Homo sapiens (human)]

Official Symbol STAT1

Synonyms CANDF7; IMD31A; IMD31B; IMD31C; ISGF-3; STAT91

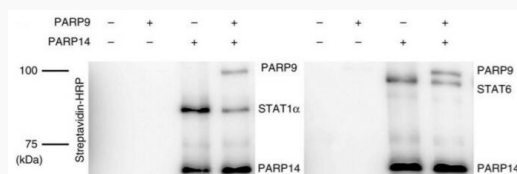
Gene ID 6772

mRNA Refseq NM_007315.4

Protein Refseq NP_009330.1

MIM 600555

UniProt ID P42224



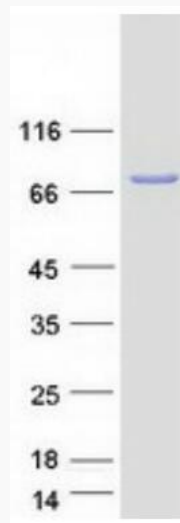
PARP9 inhibits the ADP-ribosylation of STAT1 alpha and STAT6 by PARP14 through protein ribosylation assay. PARP14 autoribosylation is also indicated. Biotin-labeled ribosylation of STAT1 alpha and STAT6 is detected by Western blot

Tel: 1-631-559-9269 1-516-512-3133

Email: info@creative-biomart.com Fax: 1-631-938-8127

45-1 Ramsey Road, Shirley, NY 11967, USA

using streptavidin-HRP after SDS-PAGE.



Coomassie blue staining of purified STAT1 protein.

 Tel: 1-631-559-9269 1-516-512-3133

 Email: info@creative-biomart.com  Fax: 1-631-938-8127

 45-1 Ramsey Road, Shirley, NY 11967, USA