

Recombinant Human STAT1 Protein (Met1-Arg683), N-His tagged

Cat. No. STAT1-6359H Lot. No. (See product label)

SPECIFICATION

Product Overview	Recombinant human STAT1 (Met1-Arg683) fused with the N-His tag was expressed in E. coli.
Species	Human
Source	E.coli
ProteinLength	Met1-Arg683
Form	Lyophilized powder/frozen liquid
Molecular Mass	82.25 kDa
Purity	> 90 % as determined by SDS-PAGE
Notes	For research use only.
Storage	Use a manual defrost freezer and avoid repeated freeze thaw cycles. Store at 2 to 8 centigrade for one week. Store at -20 to -80 centigrade for twelve months from the date of receipt.
Storage Buffer	0.01M PBS, pH 7.4, 0.02 % NLS
Reconstitution	Reconstitute in sterile water for a stock solution.

 Tel: 1-631-559-9269 1-516-512-3133

 Email: info@creative-biomart.com  Fax: 1-631-938-8127

 45-1 Ramsey Road, Shirley, NY 11967, USA

Shipping They are shipped out with dry ice/blue ice unless customers require otherwise.

GENE INFORMATION

Gene Name STAT1 signal transducer and activator of transcription 1, 91kDa [Homo sapiens (human)]

Official Symbol STAT1

Synonyms STAT1; signal transducer and activator of transcription 1, 91kDa; signal transducer and activator of transcription 1, 91kD; signal transducer and activator of transcription 1-alpha/beta; ISGF 3; STAT91; transcription factor ISGF 3 components p91/p84; transcription factor ISGF-3 components p91/p84; signal transducer and activator of transcription-1; CANDF7; ISGF-3; DKFZp686B04100;

Gene ID 6772

mRNA Refseq NM_007315

Protein Refseq NP_009330

MIM 600555

UniProt ID P42224

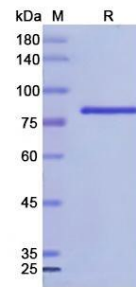
 Tel: 1-631-559-9269 1-516-512-3133

 Email: info@creative-biomart.com  Fax: 1-631-938-8127

 45-1 Ramsey Road, Shirley, NY 11967, USA



SDS-PAGE



Tel: 1-631-559-9269 1-516-512-3133

Email: info@creative-biomart.com Fax: 1-631-938-8127

45-1 Ramsey Road, Shirley, NY 11967, USA