

# Recombinant Full Length Human STAT4 Protein, C-Flag-tagged

Cat. No. STAT4-1745HFL Lot. No. (See product label)

## SPECIFICATION

<b>Product Overview</b>	Recombinant Full Length Human STAT4 Protein, fused to Flag-tag at C-terminus, was expressed in Mammalian cells.
<b>Species</b>	Human
<b>Source</b>	Mammalian Cells
<b>Description</b>	The protein encoded by this gene is a member of the STAT family of transcription factors. In response to cytokines and growth factors, STAT family members are phosphorylated by the receptor associated kinases, and then form homo- or heterodimers that translocate to the cell nucleus where they act as transcription activators. This protein is essential for mediating responses to IL12 in lymphocytes, and regulating the differentiation of T helper cells. Mutations in this gene may be associated with systemic lupus erythematosus and rheumatoid arthritis. Alternate splicing results in multiple transcript variants that encode the same protein.
<b>Form</b>	25 mM Tris HCl, pH 7.3, 100 mM glycine, 10% glycerol.
<b>Molecular Mass</b>	85.8 kDa
<b>AA Sequence</b>	MSQWNQVQQLEIKFLEQVDQFYDDNFPMEIRHLLAQWIENQDWEAASNNETMATIL LQNLLIQLDEQLGR VSKEKNLLLIHNLKRIRKVLQGKFHGNPMHVAVVISNCLREERR ILAAANMPVQGPLEKSLQSSSVSERQ RNVEHKVAAIKNSVQMTEQDQTKYLEDLQDE FDYRYKTIQTMDQSDKNSAMVNQEVLTLEMLNSLDFKRK EALSKMTQIIHETDLLM

 Tel: 1-631-559-9269 1-516-512-3133

 Email: [info@creative-biomart.com](mailto:info@creative-biomart.com)  Fax: 1-631-938-8127

 45-1 Ramsey Road, Shirley, NY 11967, USA

NTMLIEELQDWKRRQIACIGGPLHNGLDQLQNCFTLLAESLFQLRRQLEKLE EQST  
 KMTYEGDPIPMQRTHMLERVTFIYNLFKNSFVVERQPCMPHPQRPLVLKTLIQFT  
 VKLRLLIKL PELNYQVKVKASIDKNVSTLSNRRFVLCGTNVKAMSIEESSNGSLSVEF  
 RHLQPKEMKSSAGGKGNEGCH MVTEELHSITFETQICLYGLTIDLETSSLPVVMISN  
 VSQLPNAWASIIWYNVSTNDSQNLVFFNPPAT LSQLEVMMSWQFSSYVGRGLN  
 SDQLHMLAEKLTVQSSYSDGHLTWAKFCKEHLPKGSFTFWTWLEAILDL IKKHILPL  
 WIDGYVMGFVSKEKERLLLKDKMPGTFLRRFSESHLGGITFTWVDHSESGEVRFH  
 VEPYNK GRLSALPFADILRDYKVIMAENIPENPLKYLYPDIPKDKAFGKHYSSQPCEV  
 SRPTERGDKGYVPSVFIP  
 ISTIRSDSTEPHSPDLLPMSPSVYAVLRENLSPTTIETAMKSPYSAETRTRPLEQKLI  
 SEEDLAANDILDYKDDDDKV

**Purity** > 80% as determined by SDS-PAGE and Coomassie blue staining.

**Stability** Stable for 12 months from the date of receipt of the product under proper storage and handling conditions. Avoid repeated freeze-thaw cycles.

**Storage** Store at -80 centigrade.

**Concentration** >50 ug/mL as determined by microplate BCA method.

**Preparation** Recombinant protein was captured through anti-DDK affinity column followed by conventional chromatography steps.

**Protein Families** Druggable Genome, Transcription Factors

**Protein Pathways** Jak-STAT signaling pathway

**Full Length** Full L.

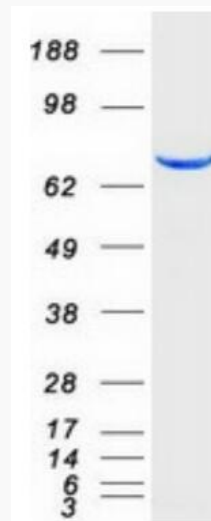
 Tel: 1-631-559-9269 1-516-512-3133

 Email: [info@creative-biomart.com](mailto:info@creative-biomart.com)  Fax: 1-631-938-8127

 45-1 Ramsey Road, Shirley, NY 11967, USA

## GENE INFORMATION

<b>Gene Name</b>	STAT4 signal transducer and activator of transcription 4 [ Homo sapiens (human) ]
<b>Official Symbol</b>	STAT4
<b>Synonyms</b>	SLEB11
<b>Gene ID</b>	6775
<b>mRNA Refseq</b>	NM_003151.4
<b>Protein Refseq</b>	NP_003142.1
<b>MIM</b>	600558
<b>UniProt ID</b>	Q14765



 Tel: 1-631-559-9269 1-516-512-3133

 Email: [info@creative-biomart.com](mailto:info@creative-biomart.com)  Fax: 1-631-938-8127

 45-1 Ramsey Road, Shirley, NY 11967, USA



Coomassie blue staining of purified STAT4 protein.

 Tel: 1-631-559-9269 1-516-512-3133

 Email: [info@creative-biomart.com](mailto:info@creative-biomart.com)  Fax: 1-631-938-8127

 45-1 Ramsey Road, Shirley, NY 11967, USA