

Recombinant Full Length Human STAT5A Protein, C-Flag-tagged

Cat. No. STAT5A-352HFL **Lot. No.** (See product label)

SPECIFICATION

Product Overview	Recombinant Full Length Human STAT5A Protein, fused to Flag-tag at C-terminus, was expressed in Mammalian cells.
Species	Human
Source	Mammalian Cells
Description	The protein encoded by this gene is a member of the STAT family of transcription factors. In response to cytokines and growth factors, STAT family members are phosphorylated by the receptor associated kinases, and then form homo- or heterodimers that translocate to the cell nucleus where they act as transcription activators. This protein is activated by, and mediates the responses of many cell ligands, such as IL2, IL3, IL7 GM-CSF, erythropoietin, thrombopoietin, and different growth hormones. Activation of this protein in myeloma and lymphoma associated with a TEL/JAK2 gene fusion is independent of cell stimulus and has been shown to be essential for tumorigenesis. The mouse counterpart of this gene is found to induce the expression of BCL2L1/BCL-X(L), which suggests the antiapoptotic function of this gene in cells. Alternatively spliced transcript variants have been found for this gene.
Form	25 mM Tris HCl, pH 7.3, 100 mM glycine, 10% glycerol.
Molecular Mass	90.5 kDa
AA Sequence	MAGWIQAQQLQGDALRQMQVLYGQHFPPIEVRHYLAQWIESQPWDAIDLDPQDRA

 Tel: 1-631-559-9269 1-516-512-3133

 Email: info@creative-biomart.com  Fax: 1-631-938-8127

 45-1 Ramsey Road, Shirley, NY 11967, USA

QATQLLEGLVQELQK KAEHQVGEDGFLLKIKLGHYATQLQKTYDRCPLELVRCIRHI
 LYNEQRLVREANNCSSPAGILVDAMSQK HLQINQTFEELRLVTQDTENELKKLQQT
 QEYFIIQYQESLRIQAQFAQLAQLSPQERLSRETALQQKQVS LEAWLQREAQTLQQ
 YRVELAEKHQKTLQLLRKQQTIILDDELIQWKRRQQLAGNGGPPPEGSLDVLQSWCE
 KLAEIIWQNRQQIRRAEHLCCQLPIPGPVEEMLAEVNATITDIISALVTSTFIIKQPPQ
 VLKTQTKFAA TVRLLVGGKLVNVMNPPQVKATIISEQQAKSLLKNENTRNECSGEIL
 NNCCVMEYHQATGTLSAHFRNMS LKRIKRADRRGAESVTEEKFTVLFESQFSVGS
 NELVFQVKTLSPVVVIVHGSQDHNATATVLWDNAFAE PGRVPPFAVPDKVLWPQLC
 EALNMKFKAEVQSNRGLTKENLVFLAQKLFNNSSSHLEDYSGLSVSWSQFNR ENL
 PGWNYTFWQWFDGVMVLLKHHKPHWNDGAILGFVNKQQAHDLLINKPDGTFLLR
 FSDSEIGGITIA WKFDSPERNLWNLKPFTTRDFSIRSLADRLGDLSYLIYVFPDRPKD
 EVFSKYYPVLAKAVDGYVKPQIK QVVPEFVNASADAGGSSATYMDQAPSPAVCP
 QAPYNMYPQNPDHVLDQDGEFDLDETMDVARHVEELLRR
 PMDSLDSRLSPPAGLFTSARGSLSTRTRPLEQKLISEEDLAANDILDYKDDDDKV

Purity	> 80% as determined by SDS-PAGE and Coomassie blue staining.
Stability	Stable for 12 months from the date of receipt of the product under proper storage and handling conditions. Avoid repeated freeze-thaw cycles.
Storage	Store at -80 centigrade.
Concentration	>50 ug/mL as determined by microplate BCA method.
Preparation	Recombinant protein was captured through anti-DDK affinity column followed by conventional chromatography steps.
Protein Families	Druggable Genome, ES Cell Differentiation/IPS, Stem cell relevant signaling - DSL/Notch pathway, Stem cell relevant signaling - JAK/STAT signaling pathway, Transcription Factors

 Tel: 1-631-559-9269 1-516-512-3133

 Email: info@creative-biomart.com
 Fax: 1-631-938-8127

 45-1 Ramsey Road, Shirley, NY 11967, USA

Protein Pathways Acute myeloid leukemia, Chronic myeloid leukemia, ErbB signaling pathway, Jak-STAT signaling pathway, Pathways in cancer

Full Length Full L.

GENE INFORMATION

Gene Name STAT5A signal transducer and activator of transcription 5A [Homo sapiens (human)]

Official Symbol STAT5A

Synonyms MGF; STAT5

Gene ID 6776

mRNA Refseq NM_003152.4

Protein Refseq NP_003143.2

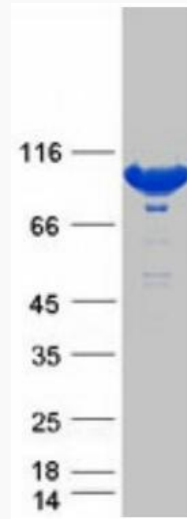
MIM 601511

UniProt ID P42229

 Tel: 1-631-559-9269 1-516-512-3133

 Email: info@creative-biomart.com  Fax: 1-631-938-8127

 45-1 Ramsey Road, Shirley, NY 11967, USA



Coomassie blue staining of purified STAT5A protein.

 Tel: 1-631-559-9269 1-516-512-3133

 Email: info@creative-biomart.com  Fax: 1-631-938-8127

 45-1 Ramsey Road, Shirley, NY 11967, USA