

Recombinant Mouse STAT6 Protein, His-tagged

Cat. No. STAT6-01M **Lot. No.** (See product label)

SPECIFICATION

Product Overview	Recombinant Mouse Stat6 protein, fused with His-tag, was expressed in E. coli.
Species	Mouse
Source	E.coli
ProteinLength	1-837 aa
Description	Enables RNA polymerase II cis-regulatory region sequence-specific DNA binding activity. Involved in interleukin-4-mediated signaling pathway and positive regulation of cold-induced thermogenesis. Acts upstream of or within several processes, including T-helper 1 cell lineage commitment; mammary gland development; and regulation of nucleobase-containing compound metabolic process. Located in chromatin; cytoplasm; and nucleus. Is expressed in several structures, including 2-cell stage embryo; alimentary system; lower urinary tract; male reproductive system; and olfactory epithelium. Human ortholog(s) of this gene implicated in lipid nephrosis; prostate carcinoma; and urinary schistosomiasis. Orthologous to human STAT6 (signal transducer and activator of transcription 6).
Form	PBS buffer, pH 7.4.
Molecular Mass	95.9 kDa
AA Sequence	MGSSHHHHHH SGLVPRGSH MSLWGLISKM SPEKLQRLYV DFPQRLRHLL ADWLESQPWE FLVGSDAFCY NMASALLSAT VQRLQATAGE QGKGNSILPH

 Tel: 1-631-559-9269 1-516-512-3133

 Email: info@creative-biomart.com  Fax: 1-631-938-8127

 45-1 Ramsey Road, Shirley, NY 11967, USA

ISTLESIYQR DPLKLVATIR QILQGEKKAV IEEFRHLP GP FHRKQEELKF
 TTALGRLQHR VRETRLLRES LQQGAKTGQV SLQNLIDPPV NGPGPSEDLA
 TMLQGTVDL EATQALVLKR IQIWKRRQQQL AGNGTPFEES LAGLQERCES
 LVEIYSQLQQ EIGAASGELE PKTRASLISR LDEVLRTLVT SSFLVEKQPP
 QVLKTQTKFQ AGVRFLGLQ FLGTSAPPM VRADMVTEKQ ARELSLAQGP
 GTGVESTGEI MNNTVPLENS IPSNCCSALF KNLLKKIKR CERKGTESVT
 EEKCAVLFST SFTLGPNKLL IQLQALSLPL VVIVHGNQDN NAKATILWDN
 AFSEMDRVPF VVAERVPWEK MCETLNLKFM AEVGTSRGLL PEHFLFLAQK
 IFNDNSLSVE AFQHRCVSW S QFNKEILLGR GFTFWQWFDG VLDLTKRCLR
 SYWSDRLIIG FISKQYVTS L LLNEPDGTFL LRFSDSEIGG ITIAHVIRGQ
 DGSSQIENIQ PPSAKDLSIR SLGDRI RDLA QLKNLYPKKP KDEAFRSHYK
 PEQMGKDGRG YVSTTIKMTV ERDQPLPTPE PQMPAMVPPY DLGMAPDASM
 QLSSDMGYPP QSIHSFQSLE ESMSVLPSFQ EPHLQMPPNM SQITMPFDQP
 HPQGLLQCQS QEHAVSSPEP MLCSDVTMVE DSCLTQPVGG FPQGTWVSED
 MYPPLMPPT E QDLTKLLEN QGEAGGSLGS QPLLQSPYQ QSGISLSHLD
 LRTNPSWLE

Purity >85% by SDS-PAGE

Storage Store it under sterile conditions at -20 to -80 centigrade. It is recommended that the protein be aliquoted for optimal storage. Avoid repeated freeze-thaw cycles.

Concentration 0.5 mg/mL

GENE INFORMATION

Gene Name Stat6 signal transducer and activator of transcription 6 [Mus musculus (house mouse)]

Official Symbol STAT6

 Tel: 1-631-559-9269 1-516-512-3133

 Email: info@creative-biomart.com  Fax: 1-631-938-8127

 45-1 Ramsey Road, Shirley, NY 11967, USA

Synonyms HIES6; STAT6B; STAT6C; D12S1644; IL-4-STAT

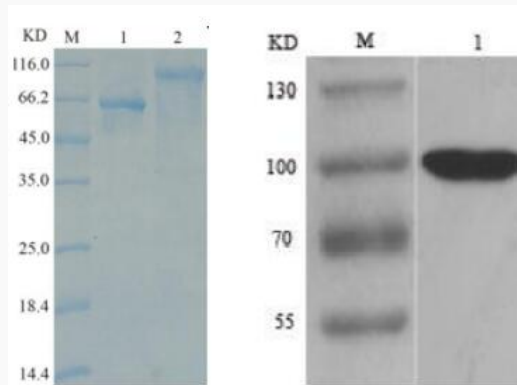
Gene ID [20852](#)

mRNA Refseq [NM_009284.2](#)

Protein Refseq [NP_033310.2](#)

UniProt ID [P52633](#)

SDS-PAGE



 Tel: 1-631-559-9269 1-516-512-3133

 Email: info@creative-biomart.com  Fax: 1-631-938-8127

 45-1 Ramsey Road, Shirley, NY 11967, USA