

Recombinant Human STEAP1 Full Length Transmembrane protein, His-SUMO-tagged

Cat. No. STEAP1-2472H Lot. No. (See product label)

SPECIFICATION

Product Overview	Recombinant Human STEAP1 protein(Q9UHE8)(1-339aa), fused to N-terminal His-SUMO tag, was expressed in E. coli.
Species	Human
Source	E.coli
ProteinLength	1-339aa
Form	If the delivery form is liquid, the default storage buffer is Tris/PBS-based buffer, 5%-50% glycerol. If the delivery form is lyophilized powder, the buffer before lyophilization is Tris/PBS-based buffer, 6% Trehalose, pH 8.0.
Molecular Mass	58.4kDa
AA Sequence	MESRKDITNQEELWKMKPRRNLEEDDYLHKDTGETSMLKRPVLLHLHQTAAHADEFD CPSELQHTQELFPQWHLPIKIAAIIASLTFLYTLREVIHPLATSHQQYFYKIPILVINKVL PMVSITLLALVYLPGVIAAIVQLHNGTKYKKFPHWLDKWMLTRKQFGLLSFFFVAVLHAI YLSYPMRRSYRYKLLNWAYQQVQQNKEDAWIEHDVWRMEIYVSLGIVGLAILALLA VTSIPSVSDSLTWREFHYIQSKLGIVSLLLGTIHALIFAWNKWIDIKQFVWYTPPTFMIA VFLPIVVLIFKSILFLPCLRKKILKIRHWEDVTKINKTEICSQL
Purity	Greater than 90% as determined by SDS-PAGE.

 Tel: 1-631-559-9269 1-516-512-3133

 Email: info@creative-biomart.com  Fax: 1-631-938-8127

 45-1 Ramsey Road, Shirley, NY 11967, USA

Storage	Store at -20°C/-80°C upon receipt, aliquoting is necessary for mutiple use. Avoid repeated freeze-thaw cycles.
Reconstitution	Please reconstitute protein in deionized sterile water to a concentration of 0.1-1.0 mg/mL. We recommend to add 5-50% of glycerol (final concentration) and aliquot for long-term storage at -20°C/-80°C. Our default final concentration of glycerol is 50%.

GENE INFORMATION

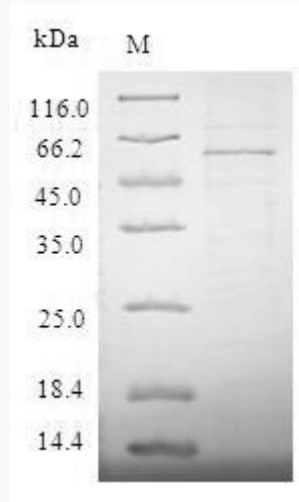
Gene Name	STEAP1 six transmembrane epithelial antigen of the prostate 1 [Homo sapiens]
Official Symbol	STEAP1
Synonyms	STEAP1; six transmembrane epithelial antigen of the prostate 1; six transmembrane epithelial antigen of the prostate , STEAP; metalloreductase STEAP1; PRSS24; six-transmembrane epithelial antigen of prostate 1; STEAP; MGC19484;
Gene ID	26872
mRNA Refseq	NM_012449
Protein Refseq	NP_036581
MIM	604415
UniProt ID	Q9UHE8

 Tel: 1-631-559-9269 1-516-512-3133

 Email: info@creative-biomart.com  Fax: 1-631-938-8127

 45-1 Ramsey Road, Shirley, NY 11967, USA

SDS-PAGE



 Tel: 1-631-559-9269 1-516-512-3133

 Email: info@creative-biomart.com  Fax: 1-631-938-8127

 45-1 Ramsey Road, Shirley, NY 11967, USA