

Active Recombinant Human STEAP1 Full Length Transmembrane protein(Nanodisc)

Cat. No. STEAP1-297H Lot. No. (See product label)

SPECIFICATION

Product Overview	Recombinant Human STEAP1 Full Length Transmembrane protein(Q9UHE8), was expressed in HEK293.
Species	Human
Source	HEK293
Form	Lyophilized from nanodisc solubilization buffer (20 mM Tris-HCl, 150 mM NaCl, pH 8.0). Normally 5% – 8% trehalose is added as protectants before lyophilization. Please see Certificate of Analysis for specific instructions.
Bio-activity	Elisa plates were pre-coated with Flag Tag STEAP1-Nanodisc (0.2µg/per well). Serial diluted anti-Flag monoclonal antibody solutions were added, washed, and incubated with secondary antibody before Elisa reading. From above data, the EC50 for anti-Flag monoclonal antibody binding with STEAP1-Nanodisc is 4.713ng/ml.
Molecular Mass	The human full length STEAP1 protein has a MW of 39.9 kDa.
Storage	Store at -20°C to -80°C for 12 months in lyophilized form. After reconstitution, if not intended for use within a month, aliquot and store at -80°C (Avoid repeated freezing and thawing). Lyophilized proteins are shipped at ambient temperature.
Reconstitution	It is recommended that sterile water be added to the vial to prepare a stock solution of 0.2 ug/ul. Centrifuge the vial at 4°C before opening to recover the entire contents.

 Tel: 1-631-559-9269 1-516-512-3133

 Email: info@creative-biomart.com  Fax: 1-631-938-8127

 45-1 Ramsey Road, Shirley, NY 11967, USA

Full Length Full L.

GENE INFORMATION

Gene Name [STEAP1](#) six transmembrane epithelial antigen of the prostate 1 [Homo sapiens]

Official Symbol [STEAP1](#)

Synonyms [STEAP1](#); six transmembrane epithelial antigen of the prostate 1; six transmembrane epithelial antigen of the prostate , [STEAP](#); metalloreductase [STEAP1](#); [PRSS24](#); six-transmembrane epithelial antigen of prostate 1; [STEAP](#); [MGC19484](#);

Gene ID [26872](#)

mRNA Refseq [NM_012449](#)

Protein Refseq [NP_036581](#)

MIM [604415](#)

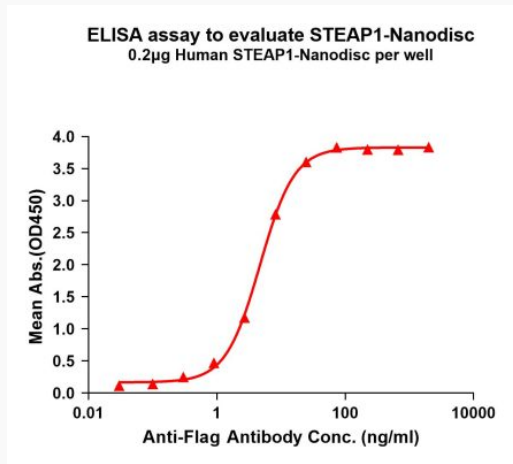
UniProt ID [Q9UHE8](#)

 Tel: 1-631-559-9269 1-516-512-3133

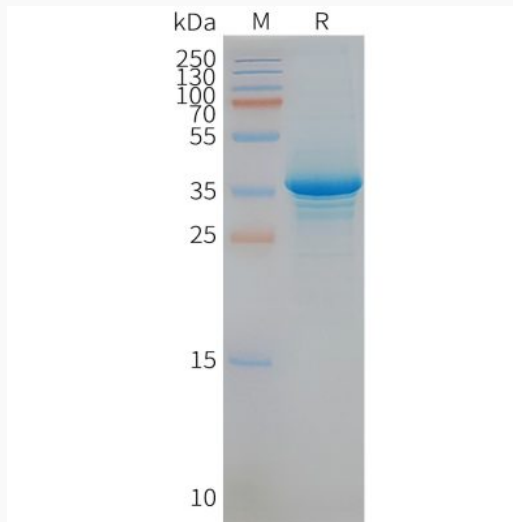
 Email: info@creative-biomart.com  Fax: 1-631-938-8127

 45-1 Ramsey Road, Shirley, NY 11967, USA

Activity



SDS-PAGE



 Tel: 1-631-559-9269 1-516-512-3133

 Email: info@creative-biomart.com  Fax: 1-631-938-8127

 45-1 Ramsey Road, Shirley, NY 11967, USA