

Recombinant Human STEAP1 Protein, Myc/DDK-tagged, C13 and N15-labeled

Cat. No. STEAP1-3928H **Lot. No.** (See product label)

SPECIFICATION

| | |
|-------------------------|--|
| Product Overview | STEAP1 MS Standard C13 and N15-labeled recombinant protein (NP_036581) with a C-terminal MYC/DDK tag, was expressed in HEK293 cells. |
| Species | Human |
| Source | HEK293 |
| Description | This gene is predominantly expressed in prostate tissue, and is found to be upregulated in multiple cancer cell lines. The gene product is predicted to be a six-transmembrane protein, and was shown to be a cell surface antigen significantly expressed at cell-cell junctions. |
| Molecular Mass | 39.9 kDa |
| AA Sequence | MESRKDITNQEELWKMKPRRNLEEDDYLHKDTGETSMLKRPVLLHLHQTAHADEFD CPSELQHTQELFPQWHLPIKIAAIIASLTFLYTLREVIHPLATSHQQYFYKIPILVINKVL PMVSITLLALVYLPGVIAAIVQLHNGTKYKKFPHWLDKWMLTRKQFGLLSFFFVAVLHAI YLSYPMRRSYRYKLLNWAYQQVQQNKEDAWIEHDVWRMEIYVSLGIVGLAILALLA VTSIPSVSDSLTWREFHYIQSKLGIVSLLLGTIHALIFAWNKWIDIKQFVWYTPPTFMIA VFLPIVVLFKLSILFLPCLRKKILKIRHWEDVTKINKTEICSQLTRTRPLEQKLISEEDLA ANDILDYKDDDDKV |
| Purity | > 80% as determined by SDS-PAGE and Coomassie blue staining |

 Tel: 1-631-559-9269 1-516-512-3133

 Email: info@creative-biomart.com  Fax: 1-631-938-8127

 45-1 Ramsey Road, Shirley, NY 11967, USA

| | |
|-----------------------|--|
| Stability | Stable for 3 months from receipt of products under proper storage and handling conditions. |
| Storage | Store at -80 centigrade. Avoid repeated freeze-thaw cycles. |
| Concentration | 50 µg/mL as determined by BCA |
| Storage Buffer | 100 mM glycine, 25 mM Tris-HCl, pH 7.3. |

GENE INFORMATION

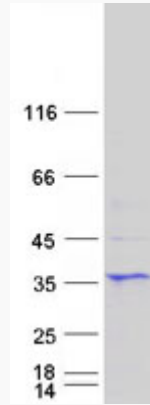
| | |
|------------------------|--|
| Gene Name | STEAP1 six transmembrane epithelial antigen of the prostate 1 [Homo sapiens (human)] |
| Official Symbol | STEAP1 |
| Synonyms | STEAP1; six transmembrane epithelial antigen of the prostate 1; six transmembrane epithelial antigen of the prostate, STEAP; metalloreductase STEAP1; PRSS24; six-transmembrane epithelial antigen of prostate 1; STEAP; MGC19484; |
| Gene ID | 26872 |
| mRNA Refseq | NM_012449 |
| Protein Refseq | NP_036581 |
| MIM | 604415 |
| UniProt ID | Q9UHE8 |

 Tel: 1-631-559-9269 1-516-512-3133

 Email: info@creative-biomart.com  Fax: 1-631-938-8127

 45-1 Ramsey Road, Shirley, NY 11967, USA

SDS-PAGE



 Tel: 1-631-559-9269 1-516-512-3133

 Email: info@creative-biomart.com  Fax: 1-631-938-8127

 45-1 Ramsey Road, Shirley, NY 11967, USA