

Recombinant Full Length Human STEAP1 Protein, C-Flag-tagged

Cat. No. STEAP1-399HFL **Lot. No.** (See product label)

SPECIFICATION

Product Overview

Recombinant Full Length Human STEAP1 Protein, fused to Flag-tag at C-terminus, was expressed in Mammalian cells.

Species

Human

Source

Mammalian Cells

Description

This gene is predominantly expressed in prostate tissue, and is found to be upregulated in multiple cancer cell lines. The gene product is predicted to be a six-transmembrane protein, and was shown to be a cell surface antigen significantly expressed at cell-cell junctions.

Form

25 mM Tris HCl, pH 7.3, 100 mM glycine, 10% glycerol.

Molecular Mass

39.7 kDa

AA Sequence

```
MESRKDITNQEELWKMKPRRNLEEDDYLHKDTGETSMLKRPVLLHLHQTAAHADEFD
CPSELQHTQELFPQ WHLPIKIAAIIASLTFLYTLREVIHPLATSHQQYFYKIPILVINKV
LPMVSITLLALVYLPGVIAAIVQ LHNGTKYKKFPHWLDKWMLTRKQFGLLSFFFVAVLH
AIYSLSYPMRRSYRYKLLNWAYQQVQQNKEDAWIE HDVWRMEIYVSLGIVGLAILAL
LAVTSIPSVSDSLTWREFHYIQSKLGIVSLLLGTIHALIFAWNKWIDI
KQFVWYTPPTFMIAVFLPIVVLIFKSILFLPCLRKKILKIRHWEDVTKINKTEICSQLTR
TRPLEQKLISEEDLAANDILDYKDDDDKV
```

 Tel: 1-631-559-9269 1-516-512-3133

 Email: info@creative-biomart.com  Fax: 1-631-938-8127

 45-1 Ramsey Road, Shirley, NY 11967, USA

Purity	> 80% as determined by SDS-PAGE and Coomassie blue staining.
Stability	Stable for 12 months from the date of receipt of the product under proper storage and handling conditions. Avoid repeated freeze-thaw cycles.
Storage	Store at -80 centigrade.
Concentration	>50 ug/mL as determined by microplate BCA method.
Preparation	Recombinant protein was captured through anti-DDK affinity column followed by conventional chromatography steps.
Protein Families	Transmembrane
Full Length	Full L.

GENE INFORMATION

Gene Name	STEAP1 STEAP family member 1 [Homo sapiens (human)]
Official Symbol	STEAP1
Synonyms	STEAP; PRSS24
Gene ID	26872
mRNA Refseq	NM_012449.3
Protein Refseq	NP_036581.1
MIM	604415

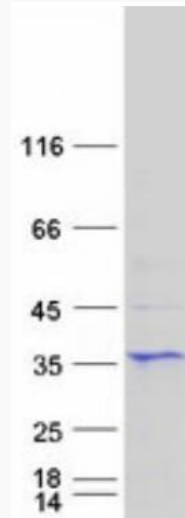
 Tel: 1-631-559-9269 1-516-512-3133

 Email: info@creative-biomart.com  Fax: 1-631-938-8127

 45-1 Ramsey Road, Shirley, NY 11967, USA

UniProt ID

Q9UHE8



Coomassie blue staining of purified STEAP1 protein.

 Tel: 1-631-559-9269 1-516-512-3133

 Email: info@creative-biomart.com  Fax: 1-631-938-8127

 45-1 Ramsey Road, Shirley, NY 11967, USA