

Recombinant Human STEAP1 Protein (Met1-His72), N-GST tagged

Cat. No. STEAP1-5801H Lot. No. (See product label)

SPECIFICATION

Product Overview	Recombinant human STEAP1 (Met1-His72) fused with the N-GST tag was expressed in E. coli.
Species	Human
Source	E.coli
ProteinLength	Met1-His72
Form	Lyophilized powder/frozen liquid
Molecular Mass	35.58 kDa
Purity	> 90 % as determined by SDS-PAGE
Notes	For research use only.
Storage	Use a manual defrost freezer and avoid repeated freeze thaw cycles. Store at 2 to 8 centigrade for one week. Store at -20 to -80 centigrade for twelve months from the date of receipt.
Storage Buffer	0.01M PBS, pH 7.4, 0.02 % NLS
Reconstitution	Reconstitute in sterile water for a stock solution.

 Tel: 1-631-559-9269 1-516-512-3133

 Email: info@creative-biomart.com  Fax: 1-631-938-8127

 45-1 Ramsey Road, Shirley, NY 11967, USA

Shipping

They are shipped out with dry ice/blue ice unless customers require otherwise.

GENE INFORMATION

Gene Name STEAP1 six transmembrane epithelial antigen of the prostate 1 [Homo sapiens (human)]

Official Symbol STEAP1

Synonyms STEAP1; six transmembrane epithelial antigen of the prostate 1; six transmembrane epithelial antigen of the prostate, STEAP; metalloreductase STEAP1; PRSS24; six-transmembrane epithelial antigen of prostate 1; STEAP; MGC19484;

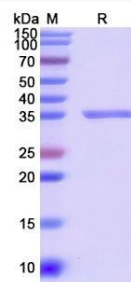
Gene ID 26872

mRNA Refseq NM_012449

Protein Refseq NP_036581

MIM 604415

UniProt ID Q9UHE8

SDS-PAGE


 Tel: 1-631-559-9269 1-516-512-3133

 Email: info@creative-biomart.com  Fax: 1-631-938-8127

 45-1 Ramsey Road, Shirley, NY 11967, USA