

## Recombinant Human STIM1 protein, His & T7-tagged

Cat. No. STIM1-8132H Lot. No. (See product label)

### SPECIFICATION

**Product Overview** Recombinant Human STIM1 aa. (Met1~Leu211 (Accession # Q13586)) fused with N-terminal His & T7 tag was produced in E. coli cells.

**Species** Human

**Source** E.coli

**ProteinLength** Met1~Leu211

#### Description

This gene encodes a type 1 transmembrane protein that mediates Ca<sup>2+</sup> influx after depletion of intracellular Ca<sup>2+</sup> stores by gating of store-operated Ca<sup>2+</sup> influx channels (SOCs). It is one of several genes located in the imprinted gene domain of 11p15.5, an important tumor-suppressor gene region. Alterations in this region have been associated with the Beckwith-Wiedemann syndrome, Wilms tumor, rhabdomyosarcoma, adrenocrotical carcinoma, and lung, ovarian, and breast cancer. This gene may play a role in malignancies and disease that involve this region, as well as early hematopoiesis, by mediating attachment to stromal cells. Mutations in this gene are associated with fatal classic Kaposi sarcoma, immunodeficiency due to defects in store-operated calcium entry (SOCE) in fibroblasts, ectodermal dysplasia and tubular aggregate myopathy. This gene is oriented in a head-to-tail configuration with the ribonucleotide reductase 1 gene (RRM1), with the 3' end of this gene situated 1.6 kb from the 5' end of the RRM1 gene. Alternative splicing of this gene results in multiple transcript variants.

 Tel: 1-631-559-9269 1-516-512-3133

 Email: [info@creative-biomart.com](mailto:info@creative-biomart.com)  Fax: 1-631-938-8127

 45-1 Ramsey Road, Shirley, NY 11967, USA

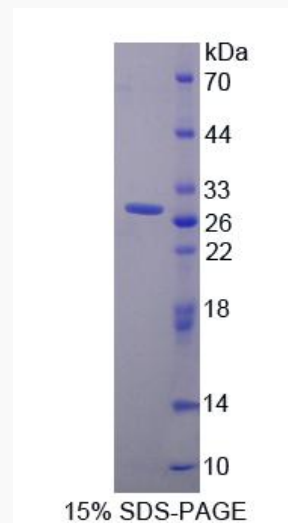
<b>Form</b>	Freeze-dried powder
<b>Molecular Mass</b>	Predicted Molecular Mass: 27.9kDa
<b>Endotoxin</b>	<1.0EU per 1ug (determined by the LAL method)
<b>Purity</b>	>95%
<b>Characteristic</b>	The isoelectric point is 5.3.
<b>Applications</b>	SDS-PAGE; WB; ELISA; IP
<b>Stability</b>	The thermal stability is described by the loss rate of the target protein. The loss rate was determined by accelerated thermal degradation test, that is, incubate the protein at 37°C for 48h, and no obvious degradation and precipitation were observed. (Referring from China Biological Products Standard, which was calculated by the Arrhenius equation.) The loss of this protein is less than 5% within the expiration date under appropriate storage condition.
<b>Storage</b>	Avoid repeated freeze/thaw cycles. Store at 2-8°C for one month. Aliquot and store at -80°C for 12 months.
<b>Storage Buffer</b>	Supplied as lyophilized form in 20mM Tris, 150mM NaCl, pH8.0, containing 1mM EDTA, 1mM DTT, 0.01% sarcosyl, 5% trehalose, and preservative.
<b>Reconstitution</b>	Reconstitute in sterile ddH2O.
<b>GENE INFORMATION</b>	
<b>Gene Name</b>	STIM1 stromal interaction molecule 1 [ Homo sapiens (human) ]

 Tel: 1-631-559-9269 1-516-512-3133

 Email: [info@creative-biomart.com](mailto:info@creative-biomart.com)  Fax: 1-631-938-8127

 45-1 Ramsey Road, Shirley, NY 11967, USA

<b>Official Symbol</b>	STIM1
<b>Synonyms</b>	GOK; TAM; TAM1; IMD10; STRMK; D11S4896E; stromal interaction molecule 1
<b>Gene ID</b>	6786
<b>mRNA Refseq</b>	NM_001277961.1
<b>Protein Refseq</b>	NP_001264890.1
<b>UniProt ID</b>	Q13586

**SDS-PAGE**

 Tel: 1-631-559-9269 1-516-512-3133

 Email: [info@creative-biomart.com](mailto:info@creative-biomart.com)  Fax: 1-631-938-8127

 45-1 Ramsey Road, Shirley, NY 11967, USA