

Recombinant Human STING1 Protein, His-tagged

Cat. No. STING1-006H **Lot. No.** (See product label)

SPECIFICATION

Product Overview	Recombinant human STING R232, G230A, R293Q mutant (138-379, N-terminal truncation) with a N-terminal histidine-tag was purified from E. coli.
Species	Human
Source	E.coli
ProteinLength	138-379
Description	This gene encodes a five transmembrane protein that functions as a major regulator of the innate immune response to viral and bacterial infections. The encoded protein is a pattern recognition receptor that detects cytosolic nucleic acids and transmits signals that activate type I interferon responses. The encoded protein has also been shown to play a role in apoptotic signaling by associating with type II major histocompatibility complex. Mutations in this gene are the cause of infantile-onset STING-associated vasculopathy. Alternate splicing results in multiple transcript variants.
Form	50 mM HEPES, pH 8.0, 150 mM sodium chloride, and 10%
Molecular Mass	28.8 kDa
Purity	≥80% estimated by SDS-PAGE
Stability	≥ 1 year

 Tel: 1-631-559-9269 1-516-512-3133

 Email: info@creative-biomart.com  Fax: 1-631-938-8127

 45-1 Ramsey Road, Shirley, NY 11967, USA

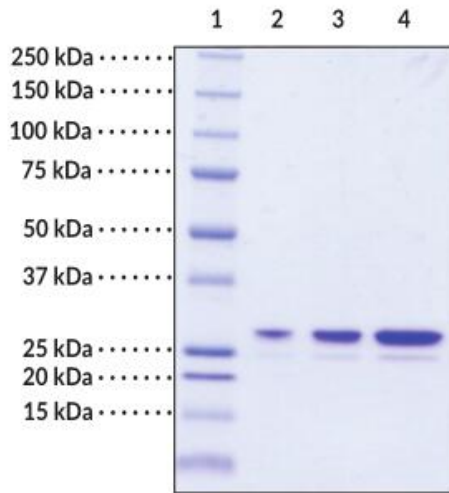
Storage	Store at -80 centigrade
Shipping	Dry ice in continental US; may vary elsewhere
GENE INFORMATION	
Gene Name	STING1 stimulator of interferon response cGAMP interactor 1 [Homo sapiens (human)]
Official Symbol	STING1
Synonyms	STING1; stimulator of interferon response cGAMP interactor 1; ERIS; MITA; MPYS; SAVI; NET23; STING; hMITA; hSTING; TMEM173; STING-beta; stimulator of interferon genes protein; N-terminal methionine-proline-tyrosine-serine plasma membrane tetraspanner; endoplasmic reticulum IFN stimulator; endoplasmic reticulum interferon stimulator; mitochondrial mediator of IRF3 activation;stimulator of interferon protein;transmembrane protein 173
Gene ID	340061
mRNA Refseq	NM_001301738
Protein Refseq	NP_001288667
MIM	612374
UniProt ID	V5V0K2

 Tel: 1-631-559-9269 1-516-512-3133

 Email: info@creative-biomart.com  Fax: 1-631-938-8127

 45-1 Ramsey Road, Shirley, NY 11967, USA

**SDS-PAGE analysis
of STING1.**



Lane 1: MW Markers

Lane 2: STING1 variant (1 g)

Lane 3: STING1 variant (2 g)

Lane 4: STING1 variant (4 g)