

Recombinant Full Length Human STING1 Protein, C-Flag-tagged

Cat. No. STING1-08HFL **Lot. No.** (See product label)

SPECIFICATION

| | |
|-------------------------|--|
| Product Overview | Recombinant Full Length Human STING1 Protein, fused to Flag-tag at C-terminus, was expressed in Mammalian cells. |
| Species | Human |
| Source | Mammalian Cells |
| Description | This gene encodes a five transmembrane protein that functions as a major regulator of the innate immune response to viral and bacterial infections. The encoded protein is a pattern recognition receptor that detects cytosolic nucleic acids and transmits signals that activate type I interferon responses. The encoded protein has also been shown to play a role in apoptotic signaling by associating with type II major histocompatibility complex. Mutations in this gene are the cause of infantile-onset STING-associated vasculopathy. Alternate splicing results in multiple transcript variants. |
| Form | 25 mM Tris HCl, pH 7.3, 100 mM glycine, 10% glycerol. |
| Molecular Mass | 42 kDa |
| AA Sequence | MPHSSLHPSIPCPRGHGAQKAALVLLSACLVTWGLGEPPEHTLRYLVLHLASLQLG LLLNGVCSLAEEL RHIHSRYRGSYWRTVRACLGCPLRRGALLLSIYFYSLPNAVG PPFTWMLALLGLSQALNILLGLKGLA PAEISAVCEKGNFNVAHGLAWSYYIGYLRIL PELQARIRTYNQHYNNLLRGAVSQRLYILLPLDCGVPD NLSMADPNIRFLDKLPQQT |

 Tel: 1-631-559-9269 1-516-512-3133

 Email: info@creative-biomart.com  Fax: 1-631-938-8127

 45-1 Ramsey Road, Shirley, NY 11967, USA

GDHAGIKDRVYSNSIYELLENGQRAGTCVLEYATPLQTLFAMSQYSQAGFS REDRL
 EQAKLFCRTLEDILADAPESQNNCRLIAYQEPADDSSFSLSQEVLRLRHLRQEEKEEVT
 VGSLKTSA
 VPSTSTMSQEPPELLISGMEKPLPLRTDFSTRTRPLEQKLISEEDLAANDILDYKDDDD
 KV

Purity > 80% as determined by SDS-PAGE and Coomassie blue staining.

Stability Stable for 12 months from the date of receipt of the product under proper storage and handling conditions. Avoid repeated freeze-thaw cycles.

Storage Store at -80 centigrade.

Concentration >50 ug/mL as determined by microplate BCA method.

Preparation Recombinant protein was captured through anti-DDK affinity column followed by conventional chromatography steps.

Protein Pathways Cytosolic DNA-sensing pathway, RIG-I-like receptor signaling pathway

Full Length Full L.

GENE INFORMATION

Gene Name [STING1 stimulator of interferon response cGAMP interactor 1 \[Homo sapiens \(human\) \]](#)

Official Symbol [STING1](#)

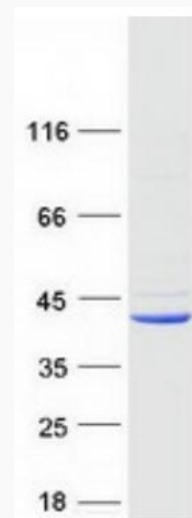
Synonyms ERIS; hMITA; hSTING; MITA; MPYS; NET23; SAVI; STING; STING-beta; TMEM173

 Tel: 1-631-559-9269 1-516-512-3133

 Email: info@creative-biomart.com  Fax: 1-631-938-8127

 45-1 Ramsey Road, Shirley, NY 11967, USA

| | |
|----------------|-------------|
| Gene ID | 340061 |
| mRNA Refseq | NM_198282.4 |
| Protein Refseq | NP_938023.1 |
| MIM | 612374 |
| UniProt ID | Q86WV6 |

SDS-PAGE

Coomassie blue staining of purified TMEM173 protein.

 Tel: 1-631-559-9269 1-516-512-3133

 Email: info@creative-biomart.com  Fax: 1-631-938-8127

 45-1 Ramsey Road, Shirley, NY 11967, USA