

Recombinant Human STIP1 Protein, His-tagged

Cat. No. STIP1-101H Lot. No. (See product label)

SPECIFICATION

Product Overview	Recombinant N-terminally Histidine-tagged full length human HOP protein (2-543) was purified from E. coli.
Species	Human
Source	E.coli
ProteinLength	2-543
Description	STIP1 is an adaptor protein that coordinates the functions of HSP70 (see HSPA1A; MIM 140550) and HSP90 (see HSP90AA1; MIM 140571) in protein folding. It is thought to assist in the transfer of proteins from HSP70 to HSP90 by binding both HSP90 and substrate-bound HSP70. STIP1 also stimulates the ATPase activity of HSP70 and inhibits the ATPase activity of HSP90, suggesting that it regulates both the conformations and ATPase cycles of these chaperones (Song and Masison, 2005 [PubMed 16100115]).
Molecular Mass	65 kDa
Purity	≥95% as determined by SDS-PAGE
Stability	≥ 6 months
Storage	At -80 centigrade.

 Tel: 1-631-559-9269 1-516-512-3133

 Email: info@creative-biomart.com  Fax: 1-631-938-8127

 45-1 Ramsey Road, Shirley, NY 11967, USA

Storage Buffer 50 mM HEPES, pH 8.0, with 150 mM sodium chloride

GENE INFORMATION

Gene Name [STIP1 stress induced phosphoprotein 1 \[Homo sapiens \(human\) \]](#)

Official Symbol [STIP1](#)

Synonyms STIP1; stress induced phosphoprotein 1; HOP; P60; STI1; STI1L; HEL-S-94n; IEF-SSP-3521; stress-induced-phosphoprotein 1; Hsp70/Hsp90-organizing protein; NY-REN-11 antigen; epididymis secretory sperm binding protein Li 94n; hsc70/Hsp90-organizing protein; renal carcinoma antigen NY-REN-11; transformation-sensitive protein IEF SSP 3521

Gene ID [10963](#)

mRNA Refseq [NM_006819](#)

Protein Refseq [NP_006810](#)

MIM [605063](#)

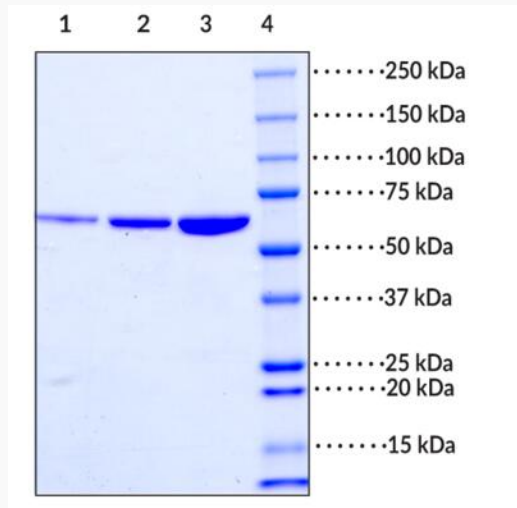
UniProt ID [P31948](#)

 Tel: 1-631-559-9269 1-516-512-3133

 Email: info@creative-biomart.com  Fax: 1-631-938-8127

 45-1 Ramsey Road, Shirley, NY 11967, USA

**SDS-PAGE analysis
of HOP**



Lane 1: HOP (1 μ g)
Lane 2: HOP (2 μ g)
Lane 3: HOP (4 μ g)
Lane 4: MW Markers

 Tel: 1-631-559-9269 1-516-512-3133

 Email: info@creative-biomart.com  Fax: 1-631-938-8127

 45-1 Ramsey Road, Shirley, NY 11967, USA