

Recombinant Full Length Human STIP1 Protein, C-Flag-tagged

Cat. No. STIP1-1618HFL Lot. No. (See product label)

SPECIFICATION

Product Overview	Recombinant Full Length Human STIP1 Protein, fused to Flag-tag at C-terminus, was expressed in Mammalian cells.
Species	Human
Source	Mammalian Cells
Description	STIP1 is an adaptor protein that coordinates the functions of HSP70 and HSP90 in protein folding. It is thought to assist in the transfer of proteins from HSP70 to HSP90 by binding both HSP90 and substrate-bound HSP70. STIP1 also stimulates the ATPase activity of HSP70 and inhibits the ATPase activity of HSP90, suggesting that it regulates both the conformations and ATPase cycles of these chaperones.
Form	25 mM Tris HCl, pH 7.3, 100 mM glycine, 10% glycerol.
Molecular Mass	62.5 kDa
AA Sequence	MEQVNELKEKGNKALSVGNIDDALQCYSEAIKLDPHNHVLYSNRSAAYAKKGDYQK AYEDGCKTVDLKPD WGKGYSRKAALFLNRFEAKRTEEGLKHEANNPQLKEG LQNMEARLAERKFMNPFNMPNLYQKLESD PRTRTLLSDPTYRELIEQLRNKPSDLG TKLQDPRIMTTLSVLLGVDLGSMDDEEEEIATPPPPPPPKKETK PEPMEEDLPENKKQ ALKEKELGNDAYKKKDFDTALKHYDKAKELDPTNMTYITNQAAYFEKGDYKNCRE LCEKAIEVGRENREDYRQIAKAYARIGNSYFKEEKYKDAIHFNKSLAEHRTPDVLKK CQQAEEKILKEQE RLAYINPDLALEEKNKGNECFQKGDYPQAMKHYTEAIKRNPKDA KLYSNRAACYTKLLEFQLALKDCEEC IQLEPTFIKGYTRKAAALEAMKDYTKAMDVY

 Tel: 1-631-559-9269 1-516-512-3133

 Email: info@creative-biomart.com  Fax: 1-631-938-8127

 45-1 Ramsey Road, Shirley, NY 11967, USA

QKALDLSSCKEAADGYQRCMMAQYNRHDSPELVKRRAM
 ADPEVQQIMSDPAMRLILEQMOKDPQALSEHLKNPVIQAQKIQLMDVGLIAIRTRTRP
 LEQKLISEEDLAANDILDYKDDDDKV

Purity	> 80% as determined by SDS-PAGE and Coomassie blue staining.
Stability	Stable for 12 months from the date of receipt of the product under proper storage and handling conditions. Avoid repeated freeze-thaw cycles.
Storage	Store at -80 centigrade.
Concentration	>50 ug/mL as determined by microplate BCA method.
Preparation	Recombinant protein was captured through anti-DDK affinity column followed by conventional chromatography steps.
Protein Families	Stem cell - Pluripotency
Protein Pathways	Prion diseases
Full Length	Full L.

GENE INFORMATION

Gene Name	STIP1 stress induced phosphoprotein 1 [Homo sapiens (human)]
Official Symbol	STIP1
Synonyms	HOP; P60; STI1; STI1L; HEL-S-94n; IEF-SSP-3521
Gene ID	10963

 Tel: 1-631-559-9269 1-516-512-3133

 Email: info@creative-biomart.com  Fax: 1-631-938-8127

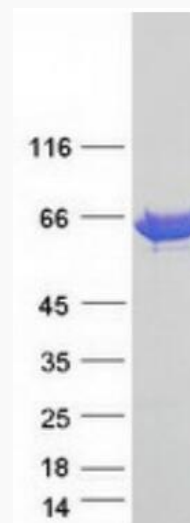
 45-1 Ramsey Road, Shirley, NY 11967, USA

mRNA Refseq [NM_006819.3](#)

Protein Refseq [NP_006810.1](#)

MIM [605063](#)

UniProt ID [P31948](#)



Coomassie blue staining of purified STIP1 protein.

 Tel: 1-631-559-9269 1-516-512-3133

 Email: info@creative-biomart.com  Fax: 1-631-938-8127

 45-1 Ramsey Road, Shirley, NY 11967, USA