

Recombinant Human STIP1 Protein (Met1-Lys169), N-His tagged

Cat. No. STIP1-5579H Lot. No. (See product label)

SPECIFICATION

Product Overview	Recombinant human STIP1 (Met1-Lys169) fused with the N-His tag was expressed in E. coli.
Species	Human
Source	E.coli
ProteinLength	Met1-Lys169
Form	Lyophilized powder/frozen liquid
Molecular Mass	21.78 kDa
Purity	> 90 % as determined by SDS-PAGE
Notes	For research use only.
Storage	Use a manual defrost freezer and avoid repeated freeze thaw cycles. Store at 2 to 8 centigrade for one week. Store at -20 to -80 centigrade for twelve months from the date of receipt.
Storage Buffer	0.01M PBS, pH 7.4, 0.02 % NLS
Reconstitution	Reconstitute in sterile water for a stock solution.

 Tel: 1-631-559-9269 1-516-512-3133

 Email: info@creative-biomart.com  Fax: 1-631-938-8127

 45-1 Ramsey Road, Shirley, NY 11967, USA

Shipping They are shipped out with dry ice/blue ice unless customers require otherwise.

GENE INFORMATION

Gene Name [STIP1 stress-induced-phosphoprotein 1 \[Homo sapiens \(human\) \]](#)

Official Symbol [STIP1](#)

Synonyms STIP1; stress-induced-phosphoprotein 1; HOP; Hsp70/Hsp90 organizing protein; STI1; NY-REN-11 antigen; Hsp70/Hsp90-organizing protein; hsc70/Hsp90-organizing protein; renal carcinoma antigen NY-REN-11; transformation-sensitive protein IEF SSP 3521; P60; STI1L; IEF-SSP-3521;

Gene ID [10963](#)

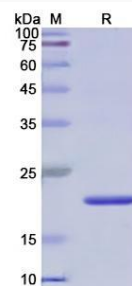
mRNA Refseq [NM_006819](#)

Protein Refseq [NP_006810](#)

MIM [605063](#)

UniProt ID [P31948](#)

SDS-PAGE



 Tel: 1-631-559-9269 1-516-512-3133

 Email: info@creative-biomart.com  Fax: 1-631-938-8127

 45-1 Ramsey Road, Shirley, NY 11967, USA